

G. INNOCENTI (\*)

## COLLECTIONS OF THE NATURAL HISTORY MUSEUM ZOOLOGICAL SECTION «LA SPECOLA» OF THE UNIVERSITY OF FLORENCE XXVIII. PHYLUM ECHINODERMATA, CLASS OPHIUROIDEA

**Abstract** - A list of the specimens belonging to the phylum Echinodermata, class Ophiuroidea, preserved in the Zoological Section «La Specola» of the Natural History Museum of the University of Florence is given.

**Key words** - Echinodermata, Ophiuroidea, Tortonese, systematics, collections.

**Riassunto** - *Cataloghi del Museo di Storia Naturale dell'Università di Firenze, Sezione di Zoologia «La Specola».* XXVIII. *Phylum Echinodermata, Classe Ophiuroidea.* Sono elencati gli esemplari appartenenti al phylum Echinodermata, Classe Ophiuroidea conservati nelle collezioni della Sezione di Zoologia «La Specola» del Museo di Storia Naturale dell'Università di Firenze.

**Parole chiave** - Echinodermata, Ophiuroidea, Tortonese, sistematica, collezioni.

### INTRODUCTION

The Ophiuroidea collection of La Specola Museum consists of 64 identified species, belonging to 2 orders and 12 families. The specimens are preserved dried or in alcohol and there are also many that have not yet been determined.

Old material has been studied by Adolfo Targioni Tozzetti (1823-1902) in the second half of the XIX century and later on by Angelo Senna (1866-1952) at the beginning of the XX century. They mostly identified specimens from Italian waters and few throughout the world. Among the material is the syntype (labelled as «cotype») of *Ophiarthrum elegans* determined by Peters (1851), which was donated by the Berlin Museum to La Specola in 1893. It has been ascertained that this specimen is included in the type series (C. Lüter, curator at Museum für Naturkunde, Berlin, pers. comm.). Moreover there are a few specimens from the oceanographic cruise of the R/N «Washington» (1881-1883), a research expedition that focused mainly on the abyssal fauna of the Mediterranean Sea, and they were studied by Carlo Bartolini Baldelli (1914).

However, the bulk of the material has been largely collected at the end of the XX century, from research missions conducted abroad by the Museum itself (in Somalia, Saudi Arabia, Yemen, Algeria, Jordan, etc.), in collaboration with the Centro di Faunistica Tropicale of CNR (in Somalia within the framework of the «Spedizione Biologica in Somalia - S.B.S.», Pardi, 1976; 1982) and by the Gruppo di Ricerche Scientifiche

e Tecniche Subacquee (G.R.S.T.S. - Underwater Scientific & Technical Research Group) (G.R.S.T.S., 1986; Azzaroli, 1974; Tortonese, 1979). The Somali collection has been studied by the Turinese researcher Enrico Tortonese (1911-1987), who identified two new species belonging to the family Amphiridae (Tortonese, 1980). Tortonese examined in several occasions the Florence collection of Ophiuroidea, in fact there are still many specimens with his handwritten labels of identification. Great quantities of ophiuroideans come from collections in the Mediterranean Sea, by means of campaigns on fishing vessels, involving many trips on commercial fishing boats, in the Sicilian Channel and southern Sardinia, in the 1980s. Such cruises were conducted by the former curator of the collection, Dr Marco Borri. In these same years, the collaboration with the former Istituto Scientifico e Tecnico di Idrobiologia e Pesca (I.S.T.I.P.) and Consorzio Regionale di Idrobiologia e Pesca (C.R.I.P.) of Livorno, resulted in the collection of large numbers of specimens, and significantly expanded the collection from Tuscan waters (Borri *et al.*, 1990). Completing the collection there are interesting specimens from several East African and southeast Asian localities, which are still not determined, and a fairly large collection of uncatalogued and unidentified specimens from Antarctica.

This paper lists all the type specimens and the determined and not yet determined specimens with the aim of providing a resource for research and/or loan to specialists.

The systematic order of the present catalogue follows that proposed by Stöhr & O'Hara (2009) and the Italian material has been compared to Fredj *et al.* (1995). Indicated for each specimen, or group of specimens, are the genus, species, author, year of description, nation, locality (with the Italian province abbreviation between brackets), date and collector, author, previous determinations and author, new authors in chronological order, number of the specimens and the Echinodermata catalogue number (MZUF, in brackets).

### Abbreviations, terms and acronyms

ca. = about; data? = unknown date; det. = determination/author; det. ? = unknown author; don. = donated by; Is. = island/isle; leg. ? = unknown collector; leg. = collector/s; Patria? = unknown locality; pur. = purchased; upd. = updated by; sp. = specimen/s; MZUF = Florence University Zoology Museum Echinodermata catalogue collection number.

(\*) Museo di Storia Naturale dell'Università di Firenze, Sezione Zoologica «La Specola», via Romana 17, 50125 Firenze, Italia. E-mail: gianna.innocenti@unifi.it

## SYSTEMATICS

Class OPHIUROIDEA Gray 1840

Order EURYALIDA Lamarck 1816

Family GORGONOCEPHALIDAE Ljungman 1867

*Astroboa nuda* (Lyman 1874)

Saudi Arabia, Jeddah, Obhor Creek, -15 m, IV.1977, leg. G.R.S.T.S., det. E. Tortonese, 1 sp. (MZUF 299)

Saudi Arabia, Jeddah, Obhor Creek, -15 m, IV.1977, leg. G.R.S.T.S., det. E. Tortonese, 5 sp. (MZUF 1600)

Saudi Arabia, Jeddah, Sharm Obhor, IV.1977, leg. G.R.S.T.S., det. E. Tortonese, 1 sp. (MZUF 1634)

*Astrospartus mediterraneus* (Risso 1816)

Italy, (GR) Monte Argentario, -60 m, 22.XII.1991, leg. M. De Pirro, det. G. Innocenti, 1 sp. (MZUF 2035)

Italy, Sicily, <1843, leg. ?, previous det. *Asterophyton arborescens*, det. A. Targioni Tozzetti, *Gorgonocephalus arborescens*, det. A. Senna, upd. E. Tortonese, 1 sp. (MZUF 1602)

*Gorgonocephalus arcticus* Leach 1819

USA, Massachusetts, off Cape Cod, 25-35 fathoms, 1879, don. the U.S. National Museum, Smithsonian Institution, previous det. *Gorgonocephalus agassizii*, det. A. Senna and E. Tortonese, upd. G. Innocenti, 2 sp. (MZUF 1603)

USA, Massachusetts, off Cape Cod, 25-35 fathoms, 1879, don. the U.S. National Museum, Smithsonian Institution, previous det. *Gorgonocephalus agassizii*, det. A. Senna and E. Tortonese, upd. G. Innocenti, 2 sp. (MZUF 2113)

*Gorgonocephalus* cfr. *eucnemis* (Müller & Troschel 1842)

Norway, Fjord of Lofoten, 1895, pur. G.A. Franck, previous det. *Gorgonocephalus malmgreni*?, det. A. Senna and E. Tortonese, upd. G. Innocenti, 1 sp. (MZUF 1601)

GORGONOCEPHALIDAE GEN. SP.

Somalia, Gesira, X.1981, leg. M. Vannini, 1 sp. (MZUF 2073)

Order OPHIURIDA Müller & Troschel 1840

Suborder OPHIOMYXINA Fell 1962

Family OPHIOMYXIDAE Ljungman 1867

*Ophiomyxa australis* Lütken 1869

Yemen, Aden, X.1879, don. Prince Tommaso, det. A. Senna and E. Tortonese, 2 sp. (MZUF 805)

Somalia, Sar Uanle, XII.1976, leg. S.B.S., det. E. Tortonese, 1 sp. (MZUF 339)

Kenya, Shimoni, 21.XI.1993, leg. M. Borri & C. Volpi, det. M. Borri, 1 sp. (MZUF 2013)

*Ophiomyxa pentagona* (Lamarck 1816)

Italy, (TS) Trieste, I.1882, don. A. Stossich, det. A. Senna and E. Tortonese, 5 sp. (MZUF 216)

Italy, (LI) Livorno, Lat. 43°14'63"N Long. 09°31'36"E, -191 m, 6.IX.1986, leg. I.S.T.I.P., det. M. Borri, 3 sp. (MZUF 913)

Italy, (LI) Livorno, Lat. 43°04'46"N Long. 10°28'41"E, -48 m, 30.IV.1987, leg. I.S.T.I.P., det. M. Borri, 1 sp. (MZUF 1324)

Italy, (LI) Elba Is., Portoferraio, II.1882, don. V. Toscanelli, det. A. Senna and E. Tortonese, 5 sp. (MZUF 215)

Italy, (SS) Maddalena Is., Porto Camicie, VIII-IX.1881, leg. E.H. Giglioli, det. A. Senna and E. Tortonese, 1 sp. (MZUF 214)

Italy, (SS) Maddalena Is., Porto Camicie, R/N «Washington», 29.VIII.1881, leg. E.H. Giglioli, det. C. Bartolini Baldelli, 1 sp. (MZUF 218)

Italy, (CA) Cagliari, V-VI.1869, leg. A. Targioni Tozzetti, det. A. Senna and E. Tortonese, 2 sp. (MZUF 217)

Italy, (CA) E/SE of Cagliari, 3.V.1996, leg. M. Borri & C. Volpi, det. G. Eva, 5 sp. (MZUF 1873)

Italy, (CA) Gulf of Cagliari, 25.VI.1996, leg. M. Borri & C. Volpi, det. G. Eva, 3 sp. (MZUF 1840)

Italy, (CA) Gulf of Cagliari, 25.VI.1996, leg. M. Borri & C. Volpi, det. G. Eva, 3 sp. (MZUF 1843)

Italy, (CA) Porto Corallo, 14.VII.1984, leg. M. Borri & C. Volpi, det. G. Eva, 2 sp. (MZUF 1834)

Italy, (CA) Quirra, 14.VII.1997, leg. M. Borri & C. Volpi, det. G. Eva, 2 sp. (MZUF 1841)

Italy, (CA) Quirra, 14.VII.1997, leg. M. Borri & C. Volpi, det. G. Eva, 3 sp. (MZUF 1842)

Italy, (CA) southern Sardinia, 13.VI.2000, leg. M. Borri & C. Volpi, det. G. Eva, 1 sp. (MZUF 1838)

Italy, (CA) southern Sardinia, 20.V.1992, leg. M. Borri & C. Volpi, det. G. Eva, 1 sp. (MZUF 1929)

Italy, (CA) southern Sardinia, 27.VI.2001, leg. M. Borri & C. Volpi, det. G. Eva, 1 sp. (MZUF 1837)

Italy, (CA) southern Sardinia, 28.VI.2001, leg. M. Borri & C. Volpi, det. G. Eva, 1 sp. (MZUF 1836)

Italy, (CA) southern Sardinia, 28.VI.2001, leg. M. Borri & C. Volpi, det. G. Eva, 5 sp. (MZUF 1839)

Italy, (CA) southern Sardinia, 3.VII.2001, leg. M. Borri & C. Volpi, det. G. Eva, 2 sp. (MZUF 1835)

Italy, (NA) Gulf of Naples, IX.1874, leg. G. Cavanna, det. A. Senna and E. Tortonese, 1 sp. (MZUF 221)

Italy, (NA) Gulf of Naples, IX.1892, pur. Stazione Zoologica Napoli, det. ?, 2 sp. (MZUF 2114)

Italy, (TP) Mazara del Vallo, 9.IX.1984, leg. M. Borri, P. Mannini & C. Volpi, det. G. Innocenti, 2 sp. (MZUF 2054)

Italy, (TP) Mazara del Vallo, 11.IX.1984, leg. M. Borri, P. Mannini & C. Volpi, det. G. Innocenti, 1 sp. (MZUF 1996)

Italy, (TP) Mazara del Vallo, 8.IX.1984, leg. M. Borri, P. Mannini & C. Volpi, det. G. Innocenti, 1 sp. (MZUF 2124)

Italy, (TP) Mazara del Vallo, 9.IX.1984, leg. M. Borri, P. Mannini & C. Volpi, det. G. Innocenti, 1 sp. (MZUF 1985)

Italy, (TP) Mazara del Vallo, 11.IX.1984, leg. M. Borri, P. Mannini & C. Volpi, det. G. Innocenti, 10 sp. (MZUF 2037)

Italy, (TP) Mazara del Vallo, 11.IX.1984, leg. M. Borri, P. Mannini & C. Volpi, det. G. Innocenti, 1 sp. (MZUF 2033)

Italy, (TP) Mazara del Vallo, 14.IX.1984, leg. M. Borri, P. Mannini & C. Volpi, det. G. Innocenti, 2 sp. (MZUF 2034)  
 Italy, (TP) Mazara del Vallo, 14.IX.1984, leg. M. Borri, P. Mannini & C. Volpi, det. G. Innocenti, 1 sp. (MZUF 2019)  
 Italy, (TP) Mazara del Vallo, 14.IX.1984, leg. M. Borri, P. Mannini & C. Volpi, det. G. Innocenti, 1 sp. (MZUF 2125)  
 Italy, (TP) Mazara del Vallo, 14.IX.1984, leg. M. Borri, P. Mannini & C. Volpi, det. G. Innocenti, 1 sp. (MZUF 2215)  
 Italy, (TP) Mazara del Vallo, 9.IX.1984, leg. M. Borri, P. Mannini & C. Volpi, det. G. Innocenti, 1 sp. (MZUF 2018)  
 Italy, (TP) Mazara del Vallo, 12.IX.1984, leg. M. Borri, P. Mannini & C. Volpi, det. G. Innocenti, 1 sp. (MZUF 2021)  
 Italy, (AG) 20 miles W of Lampione Is., R/N «Washington», 11.VIII.1882, leg. E.H. Giglioli, det. C. Bartolini Baldelli, 3 sp. (MZUF 808)  
 Italy, Lat. 39°49'40"N Long. 9°49'08"E, - 60 m, R/N «Washington», VIII.1881, leg. E.H. Giglioli, det. C. Bartolini Baldelli, 4 sp. (MZUF 809)  
 France, Nice, VI.1884, pur. Gal Frères, det. A. Senna and E. Tortonese, 1 sp. (MZUF 222)  
 Tunisia, Galite Is., 1966, leg. G.R.S.T.S., det. G. Innocenti, 1 sp. (MZUF 2044)  
 Adriatic Sea, <1843, leg. ?, det. A. Targioni Tozzetti, A. Senna and E. Tortonese, 1 sp. (MZUF 220)  
 Mediterranean Sea, <1843, leg. ?, det. A. Targioni Tozzetti and A. Senna, 5 sp. (MZUF 219)

*Ophiomyxa* sp.

Fiji, IV.1888, pur. Pohl, det. A. Targioni Tozzetti and A. Senna, 3 sp. (MZUF 806)  
 New Zealand, IV.1888, pur. Pohl, det. A. Targioni Tozzetti and A. Senna, 1 sp. (MZUF 807)

Suborder OPHIURINA Müller & Troschel 1840

Family OPHIACANTHIDAE Perrier 1891

Subfamily OPHIACANTHINAE Paterson 1985

*Ophiacantha abyssicola* Verrill 1879

Norway, Fjord of Lofoten, 1895, pur. G.A. Franck, det. A. Senna, 2 sp. (MZUF 1604)

*Ophiacantha anomala* G.O. Sars 1872

Norway, Fjord of Lofoten, 1895, pur. G.A. Franck, det. A. Senna, 6 sp. (MZUF 1605)

*Ophiacantha setosa* (Retzius 1805)

Italy, (LI) Livorno, Lat. 42°53'13"N Long. 10°08'53"E, -119 m, 8.V.1986, leg. I.S.T.I.P., det. M. Borri, 1 sp. (MZUF 1067)

Italy, (LI) Livorno, Lat. 42°55'09"N Long. 10°13'27"E, -119 m, 8.IX.1986, leg. I.S.T.I.P., det. M. Borri, 1 sp. (MZUF 916)

Italy, (LI) Livorno, Lat. 42°55'81"N Long. 10°21'55"E, -94 m, 9.V.1986, leg. I.S.T.I.P., det. M. Borri, 9 sp. (MZUF 1077)

Italy, (LI) Livorno, Lat. 42°55'81"N Long. 10°22'46"E, -87 m, 30.IV.1987, leg. I.S.T.I.P., det. M. Borri, 2 sp. (MZUF 1314)

Italy, (LI) Livorno, Lat. 42°58'37"N Long. 09°46'81"E, -143 m, 8.IX.1986, leg. I.S.T.I.P., det. M. Borri, 2 sp. (MZUF 914)

Italy, (LI) Livorno, Lat. 42°58'50"N Long. 10°21'50"E, -108 m, 30.IV.1987, leg. I.S.T.I.P., det. M. Borri, 4 sp. (MZUF 1315)

Italy, (LI) Livorno, Lat. 43°00'74"N Long. 09°50'56"E, -100 m, 23.IV.1987, leg. I.S.T.I.P., det. M. Borri, 3 sp. (MZUF 1103)

Italy, (LI) Livorno, Lat. 43°00'74"N Long. 09°50'56"E, -100 m, 23.IV.1987, leg. I.S.T.I.P., det. M. Borri, 3 sp. (MZUF 1103)

Italy, (LI) Livorno, Lat. 43°02'06"N Long. 10°07'64"E, -144 m, 8.IX.1986, leg. I.S.T.I.P., det. M. Borri, 1 sp. (MZUF 905)

Italy, (LI) Livorno, Lat. 43°04'46"N Long. 10°28'41"E, -48 m, 30.IV.1987, leg. I.S.T.I.P., det. M. Borri, 1 sp. (MZUF 1313)

Italy, (LI) Livorno, Lat. 43°04'62"N Long. 10°11'76"E, -129 m, 8.IX.1986, leg. I.S.T.I.P., det. M. Borri, 2 sp. (MZUF 910)

Italy, (LI) Livorno, Lat. 43°06'48"N Long. 09°57'00"E, -134 m, 8.V.1986, leg. I.S.T.I.P., det. M. Borri, 1 sp. (MZUF 1065)

Italy, (LI) Livorno, Lat. 43°06'99"N Long. 10°20'97"E, -156 m, 8.IX.1986, leg. I.S.T.I.P., det. M. Borri, 1 sp. (MZUF 907)

Italy, (LI) Livorno, Lat. 43°10'23"N Long. 09°58'65"E, -205 m, 23.IV.1987, leg. I.S.T.I.P., det. M. Borri, 1 sp. (MZUF 1318)

Italy, (LI) Livorno, Lat. 43°17'53"N Long. 10°09'48"E, -127 m, 6.V.1986, leg. I.S.T.I.P., det. M. Borri, 1 sp. (MZUF 1056)

Italy, (LI) Livorno, Lat. 43°26'47"N Long. 10°03'41"E, -101 m, 6.V.1986, leg. I.S.T.I.P., det. M. Borri, 1 sp. (MZUF 1084)

Italy, (LI) Livorno, IV.1987, leg. I.S.T.I.P., det. M. Borri, 1 sp. (MZUF 1316)

Italy, (CA) southern Sardinia, 18.VI.1996, leg. M. Borri & C. Volpi, det. G. Eva, 2 sp. (MZUF 1876)

Italy, (NA) Gulf of Naples, IX.1892, pur. Stazione Zoologica Napoli, det. ?, 1 sp. (MZUF 1607)

*Ophiacantha spectabilis* G.O. Sars 1871

Norway, Fjord of Lofoten, 1895, pur. G.A. Franck, det. A. Senna, 4 sp. (MZUF 1606)

Infraorder CHILOPHIURINA Matsumoto 1915

Family OPHIURIDAE Müller & Troschel 1840

Subfamily OPHIURINAE Müller & Troschel 1840

*Ophiura albida* Forbes 1839

Italy, (SP) Gulf of La Spezia, 1863-64, leg. A. Targioni Tozzetti, previous det. *Ophioglypha albida* Lyman, det. A. Senna, upd. R. Fareltri, 3 sp. (MZUF 204)

Italy, (LI) Livorno, Lat. 43°04'62"N Long. 10°11'76"E, -129 m, 8.IX.1986, leg. I.S.T.I.P., det. M. Borri, 1 sp. (MZUF 909)

- Italy, (LI) Livorno, Lat. 43°12'89"N Long. 10°15'79"E, -118 m, 29.IV.1987, leg. I.S.T.I.P., det. M. Borri, 1 sp. (MZUF 1338)
- Italy, (GR) Talamone, 13.VIII.1978, leg. M. Borri, det. G. Innocenti, 1 sp. (MZUF 2027)
- Italy, (CA) Cagliari, VII.2001, leg. M. Borri & C. Volpi, det. G. Innocenti, 1 sp. (MZUF 2051)
- Italy, Lat. 41°02'58"N Long. 08°32'20"E, -370-470 m, R/N «Washington», 1881, leg. E.H. Giglioli, previous det. *Ophioglypha albida* (Forbes), det. C. Bartolini Baldelli, upd. G. Innocenti, 1 sp. (MZUF 2112)
- Germany, Gulf of Kiel, 1873, leg. K. Moebius, previous det. *Ophioglypha albida* Lyman, det. A. Targioni Tozzetti and A. Senna, upd. R. Fareltri, 1 sp. (MZUF 1632)
- Ophiura ophiura* (L. 1758)
- Italy, (TS) Trieste, I.1882, don. A. Stossich, previous det. *Ophioglypha ciliata* (Retzius), det. A. Senna, upd. R. Fareltri, 4 sp. (MZUF 205)
- Italy, (VE) Chioggia, V-VI.1872, leg. A. Renier, previous det. *Ophiolepis anulosa* Müller & Troschel, det. A. Targioni Tozzetti, *Ophioglypha ciliata* (Retzius), det. A. Senna, upd. R. Fareltri, 1 sp. (MZUF 201)
- Italy, (FC) Cesenatico, Adriatic Sea, 3.VII.1973, leg. F. Terzani, det. G. Innocenti, 2 sp. (MZUF 2091)
- Italy, (SP) Gulf of La Spezia, 1863-64, leg. A. Targioni Tozzetti, previous det. *Ophiura texturata* Lamarck, det. E. Tortonese, upd. R. Fareltri, 1 sp. (MZUF 203)
- Italy, (LI) Livorno, 3.V.1994, leg. C. Volpi., det. G. Innocenti, 4 sp. (MZUF 2005)
- Italy, (LI) Livorno, 3.V.1994, leg. C.R.I.P., det. G. Innocenti, 1 sp. (MZUF 2017)
- Italy, (LI) Livorno, 4.V.1994, leg. C. Volpi, det. G. Innocenti, 1 sp. (MZUF 2014)
- Italy, (LI) Livorno, 4.V.1994, leg. C.R.I.P., det. G. Innocenti, 2 sp. (MZUF 2015)
- Italy, (LI) Livorno, V.1994, leg. C. Volpi, det. G. Innocenti, 4 sp. (MZUF 2007)
- Italy, (LI) Livorno, 1986, leg. I.S.T.I.P., det. G. Innocenti, 1 sp. (MZUF 2208)
- Italy, (LI) Livorno, 1986, leg. I.S.T.I.P., det. G. Innocenti, 4 sp. (MZUF 2210)
- Italy, (LI) Livorno, date?, leg. I.S.T.I.P., det. G. Innocenti, 25 sp. (MZUF 1999)
- Italy, (LI) Livorno, Lat. 42°50'64"N Long. 10°02'08"E, -88 m, 9.V.1986, leg. I.S.T.I.P., det. M. Borri, 1 sp. (MZUF 1075)
- Italy, (LI) Livorno, Lat. 42°53'13"N Long. 10°08'53"E, -119 m, 9.V.1986, leg. I.S.T.I.P., det. M. Borri, 6 sp. (MZUF 1059)
- Italy, (LI) Livorno, Lat. 42°54'52"N Long. 09°47'35"E, -370 m, 29.IV.1987, leg. I.S.T.I.P., det. M. Borri, 1 sp. (MZUF 1354)
- Italy, (LI) Livorno, Lat. 42°55'09"N Long. 10°13'27"E, -119 m, 8.IX.1986, leg. I.S.T.I.P., det. M. Borri, 8 sp. (MZUF 927)
- Italy, (LI) Livorno, Lat. 42°55'81"N Long. 10°21'55"E, -94 m, 9.V.1986, leg. I.S.T.I.P., det. M. Borri, 12 sp. (MZUF 1086)
- Italy, (LI) Livorno, Lat. 42°55'81"N Long. 10°22'46"E, -87 m, 30.IV.1987, leg. I.S.T.I.P., det. M. Borri, 17 sp. (MZUF 1343)
- Italy, (LI) Livorno, Lat. 42°56'15"N Long. 10°23'22"E, -87 m, 5.IX.1986, leg. I.S.T.I.P., det. M. Borri, 13 sp. (MZUF 1054)
- Italy, (LI) Livorno, Lat. 42°57'91"N Long. 10°27'29"E, -41 m, 30.IV.1987, leg. I.S.T.I.P., det. M. Borri, 2 sp. (MZUF 1341)
- Italy, (LI) Livorno, Lat. 42°58'11"N Long. 09°50'06"E, -155 m, 9.V.1986, leg. I.S.T.I.P., det. M. Borri, 13 sp. (MZUF 1060)
- Italy, (LI) Livorno, Lat. 42°58'37"N Long. 09°46'81"E, -143 m, 10.IX.1986, leg. I.S.T.I.P., det. M. Borri, 3 sp. (MZUF 1048)
- Italy, (LI) Livorno, Lat. 42°58'50"N Long. 10°21'50"E, -108 m, 30.IV.1987, leg. I.S.T.I.P., det. M. Borri, 7 sp. (MZUF 1344)
- Italy, (LI) Livorno, Lat. 43°00'74"N Long. 09°50'56"E, -100 m, 23.IV.1987, leg. I.S.T.I.P., det. M. Borri, 5 sp. (MZUF 1109)
- Italy, (LI) Livorno, Lat. 43°02'25"N Long. 10°17'04"E, -118 m, 5.IX.1986, leg. I.S.T.I.P., det. M. Borri, 5 sp. (MZUF 1050)
- Italy, (LI) Livorno, Lat. 43°02'81"N Long. 10°19'37"E, -113 m, 30.IV.1986, leg. I.S.T.I.P., det. M. Borri, 4 sp. (MZUF 1082)
- Italy, (LI) Livorno, Lat. 43°04'27"N Long. 10°18'81"E, -113 m, 5.IX.1986, leg. I.S.T.I.P., det. M. Borri, 3 sp. (MZUF 921)
- Italy, (LI) Livorno, Lat. 43°04'46"N Long. 10°28'41"E, -48 m, 30.IV.1987, leg. I.S.T.I.P., det. M. Borri, 4 sp. (MZUF 1342)
- Italy, (LI) Livorno, Lat. 43°04'62"N Long. 10°11'76"E, -129 m, 9.IX.1986, leg. I.S.T.I.P., det. M. Borri, 1 sp. (MZUF 1053)
- Italy, (LI) Livorno, Lat. 43°06'49"N Long. 09°55'50"E, -102 m, 2.IX.1986, leg. I.S.T.I.P., det. M. Borri, 25 sp. (MZUF 1055)
- Italy, (LI) Livorno, Lat. 43°06'79"N Long. 09°48'62"E, -145 m, 8.IX.1986, leg. I.S.T.I.P., det. M. Borri, 3 sp. (MZUF 1049)
- Italy, (LI) Livorno, Lat. 43°06'99"N Long. 10°20'97"E, -156 m, 9.IX.1986, leg. I.S.T.I.P., det. M. Borri, 6 sp. (MZUF 928)
- Italy, (LI) Livorno, Lat. 43°06'99"N Long. 10°20'97"E, -156 m, 9.IX.1986, leg. I.S.T.I.P., det. M. Borri, 2 sp. (MZUF 933)
- Italy, (LI) Livorno, Lat. 43°09'30"N Long. 10°29'34"E, -31 m, 30.IV.1986, leg. I.S.T.I.P., det. M. Borri, 4 sp. (MZUF 1078)
- Italy, (LI) Livorno, Lat. 43°09'71"N Long. 09°55'12"E, -207 m, 8.V.1986, leg. I.S.T.I.P., det. M. Borri, 5 sp. (MZUF 1062)
- Italy, (LI) Livorno, Lat. 43°10'23"N Long. 09°58'65"E, -205 m, 23.IV.1987, leg. I.S.T.I.P., det. M. Borri, 2 sp. (MZUF 1352)
- Italy, (LI) Livorno, Lat. 43°11'23"N Long. 10°27'97"E, -26 m, 5.IX.1986, leg. I.S.T.I.P., det. M. Borri, 2 sp. (MZUF 924)
- Italy, (LI) Livorno, Lat. 43°12'65"N Long. 10°27'12"E, -22 m, 30.IV.1987, leg. I.S.T.I.P., det. M. Borri, 1 sp. (MZUF 1340)
- Italy, (LI) Livorno, Lat. 43°12'89"N Long. 10°15'79"E, -118 m, 29.IV.1987, leg. I.S.T.I.P., det. M. Borri, 8 sp. (MZUF 1345)

- Italy, (LI) Livorno, Lat. 43°13'88"N Long. 10°23'49"E, -49 m, 5.IX.1986, leg. I.S.T.I.P., det. M. Borri, 10 sp. (MZUF 1051)
- Italy, (LI) Livorno, Lat. 43°15'24"N Long. 10°20'03"E, -29 m, 30.IV.1986, leg. I.S.T.I.P., det. M. Borri, 7 sp. (MZUF 1076)
- Italy, (LI) Livorno, Lat. 43°17'53"N Long. 10°09'48"E, -127 m, 6.V.1986, leg. I.S.T.I.P., det. M. Borri, 5 sp. (MZUF 1061)
- Italy, (LI) Livorno, Lat. 43°24'30"N Long. 09°51'29"E, -204 m, 6.V.1986, leg. I.S.T.I.P., det. M. Borri, 5 sp. (MZUF 1069)
- Italy, (LI) Livorno, Lat. 43°24'66"N Long. 10°03'22"E, -136 m, 23.IV.1987, leg. I.S.T.I.P., det. M. Borri, 5 sp. (MZUF 1347)
- Italy, (LI) Livorno, Lat. 43°26'07"N Long. 10°14'41"E, -77 m, 5.IX.1986, leg. I.S.T.I.P., det. M. Borri, 1 sp. (MZUF 906)
- Italy, (LI) Livorno, Lat. 43°26'47"N Long. 10°03'41"E, -101 m, 6.V.1986, leg. I.S.T.I.P., det. M. Borri, 1 sp. (MZUF 1071)
- Italy, (LI) Livorno, Lat. 43°26'47"N Long. 10°03'41"E, -101 m, 6.V.1986, leg. I.S.T.I.P., det. M. Borri, 4 sp. (MZUF 1087)
- Italy, (LI) Livorno, Lat. 43°26'85"N Long. 09°55'05"E, -149 m, 24.IV.1987, leg. I.S.T.I.P., det. M. Borri, 5 sp. (MZUF 1349)
- Italy, (LI) Livorno, Lat. 43°27'59"N Long. 10°00'03"E, -139 m, 30.IV.1987, leg. I.S.T.I.P., det. M. Borri, 9 sp. (MZUF 1348)
- Italy, (LI) Livorno, Lat. 43°28'83"N Long. 10°16'50"E, -46 m, 2.IX.1986, leg. I.S.T.I.P., det. M. Borri, 1 sp. (MZUF 1052)
- Italy, (LI) Livorno, Lat. 43°29'54"N Long. 09°59'43"E, -146 m, 6.IX.1986, leg. I.S.T.I.P., det. M. Borri, 10 sp. (MZUF 918)
- Italy, (LI) Livorno, Lat. 43°32'56"N Long. 09°37'33"E, -578 m, 6.IX.1986, leg. I.S.T.I.P., det. M. Borri, 2 sp. (MZUF 917)
- Italy, (LI) Livorno, Lat. 43°38'92"N Long. 09°55'80"E, -139 m, 7.V.1986, leg. I.S.T.I.P., det. M. Borri, 7 sp. (MZUF 1063)
- Italy, (LI) Livorno, Lat. 43°40'61"N Long. 09°55'15"E, -22 m, 9.IV.1987, leg. I.S.T.I.P., det. M. Borri, 6 sp. (MZUF 1350)
- Italy, (LI) Livorno, Lat. 43°45'00"N Long. 10°09'50"E, -20 m, 8.IX.1986, leg. I.S.T.I.P., det. M. Borri, 2 sp. (MZUF 930)
- Italy, (LI) Livorno, Lat. 43°45'21"N Long. 09°48'22"E, -261 m, 9.IV.1987, leg. I.S.T.I.P., det. M. Borri, 17 sp. (MZUF 1353)
- Italy, (LI) Livorno, Lat. 43°50'87"N Long. 09°51'13"E, -98 m, 17.IV.1986, leg. I.S.T.I.P., det. M. Borri, 1 sp. (MZUF 1085)
- Italy, (LI) Livorno, Lat. 43°54'40"N Long. 10°06'23"E, -15 m, 2.IX.1986, leg. I.S.T.I.P., det. M. Borri, 8 sp. (MZUF 920)
- Italy, (CA) Arbatax, 16.VII.1997, leg. M. Borri & C. Volpi, det. G. Eva, 1 sp. (MZUF 1673)
- Italy, (CA) Capo di Pula, 27.VI.1996, leg. M. Borri & C. Volpi, det. G. Eva, 1 sp. (MZUF 1847)
- Italy, (CA) Capo Spartivento, 9.VII.1997, leg. M. Borri & C. Volpi, det. G. Eva, 2 sp. (MZUF 1861)
- Italy, (CA) Capo Spartivento, 9.VII.1997, leg. M. Borri & C. Volpi, det. G. Eva, 5 sp. (MZUF 1866)
- Italy, (CA) Capo Teulada, Sant'Antioco, 19.VI.1996, leg. M. Borri & C. Volpi, det. G. Eva, 5 sp. (MZUF 1846)
- Italy, (CA) Capo Teulada, Sant'Antioco, 19.VI.1996, leg. M. Borri & C. Volpi, det. G. Eva, 1 sp. (MZUF 1859)
- Italy, (CA) E/SE of Cagliari, 3.V.1988, leg. M. Borri & C. Volpi, det. G. Eva, 6 sp. (MZUF 1844)
- Italy, (CA) Gulf of Cagliari, 25.VI.1996, leg. M. Borri & C. Volpi, det. G. Eva, 2 sp. (MZUF 1871)
- Italy, (CA) Quirra, 14.VII.1997, leg. M. Borri & C. Volpi, det. G. Eva, 3 sp. (MZUF 1681)
- Italy, (CA) Quirra, 14.VII.1997, leg. M. Borri & C. Volpi, det. G. Eva, 1 sp. (MZUF 1858)
- Italy, (CA) Quirra, 14.VII.1997, leg. M. Borri & C. Volpi, det. G. Eva, 1 sp. (MZUF 1863)
- Italy, (CA) southern Sardinia, 13.VI.2000, leg. M. Borri & C. Volpi, det. G. Eva, 1 sp. (MZUF 1865)
- Italy, (CA) southern Sardinia, 17.VI.1996, leg. M. Borri & C. Volpi, det. G. Eva, 8 sp. (MZUF 1845)
- Italy, (CA) southern Sardinia, 18.V.1992, leg. M. Borri & C. Volpi, det. G. Eva, 1 sp. (MZUF 1870)
- Italy, (CA) southern Sardinia, 18.VI.1996, leg. M. Borri & C. Volpi, det. G. Eva, 7 sp. (MZUF 1848)
- Italy, (CA) southern Sardinia, 20.V.1992, leg. M. Borri & C. Volpi, det. G. Eva, 4 sp. (MZUF 1867)
- Italy, (CA) southern Sardinia, 20.V.1992, leg. M. Borri & C. Volpi, det. G. Eva, 1 sp. (MZUF 1868)
- Italy, (CA) southern Sardinia, 20.V.1992, leg. M. Borri & C. Volpi, det. G. Eva, 1 sp. (MZUF 1931)
- Italy, (CA) southern Sardinia, 20.VI.1996, leg. M. Borri & C. Volpi, det. G. Eva, 1 sp. (MZUF 1860)
- Italy, (CA) southern Sardinia, 20.VI.1996, leg. M. Borri & C. Volpi, det. G. Eva, 1 sp. (MZUF 1864)
- Italy, (CA) southern Sardinia, 25.VI.1996, leg. M. Borri & C. Volpi, det. G. Eva, 1 sp. (MZUF 1862)
- Italy, (CA) southern Sardinia, 25.VI.1996, leg. M. Borri & C. Volpi, det. G. Eva, 2 sp. (MZUF 1869)
- Italy, (CA) southern Sardinia, 26.VI.1996, leg. M. Borri & C. Volpi, det. G. Eva, 1 sp. (MZUF 1872)
- Italy, (CA) southern Sardinia, 28.VI.2001, leg. M. Borri & C. Volpi, det. M. Borri, 3 sp. (MZUF 1849)
- Italy, (NA) Gulf of Naples, IX.1874, leg. G. Cavanna, previous det. *Ophiura texturata* Lamarck, det. A. Targioni Tozzetti, *Ophioglypha ciliata* (Retzius), det. A. Senna, upd. R. Fareltri, 4 sp. (MZUF 200)
- Italy, (NA) Gulf of Naples, IX.1892, pur. Stazione Zoologica Napoli, previous det. *Ophioglypha ciliata* (Retzius), det. A. Senna, upd. R. Fareltri, 1 sp. (MZUF 202)
- Italy, (NA) Gulf of Naples, IX.1892, pur. Stazione Zoologica Napoli, previous det. *Ophioglypha lacertosa* Lyman, det. A. Senna, upd. R. Fareltri, 1 sp. (MZUF 1638)
- Italy, (NA) Gulf of Naples, XII.1864, don. P. Panceri, previous det. *Ophiura laevis* Lyman, det. A. Senna, upd. G. Innocenti, 1 sp. (MZUF 1998)
- Italy, (TA) Gulf of Taranto, IX-X.1868, leg. A. Targioni Tozzetti, previous det. *Ophiura laevis* Lyman, det. A. Senna, upd. G. Innocenti, 1 sp. (MZUF 2001)
- Italy, (ME) Messina, IX-X.1868, leg. A. Targioni Tozzetti, previous det. *Ophioderma longicauda*, det. A.

Targioni Tozzetti, *Ophiura laevis* Lyman, det. A. Senna, upd. G. Innocenti, 2 sp. (MZUF 2116)

Mediterranean Sea, <1843, leg. ?, previous det. *Ophiura texturata* Forbes, det. A. Targioni Tozzetti, *Ophioglypha ciliata* (Retzius), det. A. Senna, upd. R. Fareltri, 5 sp. (MZUF 199)

Mediterranean Sea, <1843, leg. ?, previous det. *Ophiura texturata* (Lamarck), det. ?, upd. R. Fareltri, 2 sp. (MZUF 206)

Great Britain, Folkestone, 1862, leg. Wright, previous det. *Ophiura texturata*, det. A. Targioni Tozzetti, *Ophioglypha ciliata*, det. A. Senna, upd. G. Innocenti, 1 sp. (MZUF 2122)

*Ophiura robusta* (Ayres 1851)

Bay of Fundy, 1881, don. the U.S. National Museum, Smithsonian Institution, previous det. *Ophioglypha robusta* Lyman, det. A. Senna, upd. R. Fareltri, 3 sp. (MZUF 1633)

*Ophiura sarsii* Lütken 1855

USA, Massachusetts, Mass Bay, 1881, don. the U.S. National Museum, Smithsonian Institution, det. A. Targioni Tozzetti, 5 sp. (MZUF 870)

*Ophiura* sp.

Italy, (LI) Livorno, 23.IV.1987, leg. I.S.T.I.P., det. G. Innocenti, 2 sp. (MZUF 2209)

Italy, (LI) Baratti, 6.II.1966, leg. C. De Giuli & Mantellassi, det. ?, 1 sp. (MZUF 1)

Italy, (LI) Castiglioncello, -35 m, date?, leg. M.L. Azzaroli, det. ?, 2 sp. (MZUF 866)

Israel, Palmahim, -35 m, 28.V.2004, leg. B. Galil, det. G. Innocenti, 26 sp. (MZUF 2088)

Indian Sea (= «Mar delle Indie»), <1843, leg. ?, det. ?, 1 sp. (MZUF 868)

*Stegophiura nodosa* (Lütken 1855)

Russia, White Sea, <1899, don. B.V. Sukatschhoff, det. E. Tortonese, 2 sp. (MZUF 864)

#### Infraorder GNATHOPHIURINA Matsumoto 1915

##### Family AMPHILEPIDIDAE Matsumoto 1915

*Amphilepis norvegica* (Ljungman 1865)

Norway, Fjord of Lofoten, 1895, pur. G.A. Franck, det. A. Senna, 6 sp. (MZUF 804)

##### Family AMPHIURIDAE Ljungman 1865

*Amphioplus minutus* Tortonese 1980

Somalia, Gesira, XII.1976, leg. S.B.S., det. E. Tortonese, 1 sp. (MZUF 341) HOLOTYPUS! (Fig. 1)

*Amphioplus somaliensis* Tortonese 1980

Somalia, Sar Uanle, XII.1976, leg. S.B.S., det. E. Tortonese, 1 sp. (MZUF 340) HOLOTYPUS! (Fig. 2)

*Amphipholis squamata* (Delle Chiaje 1828)

Italy, (LI) Quercianella, VIII.1972, leg. A. Mascagni, det. F. Terzani, 3 sp. (MZUF 2095)

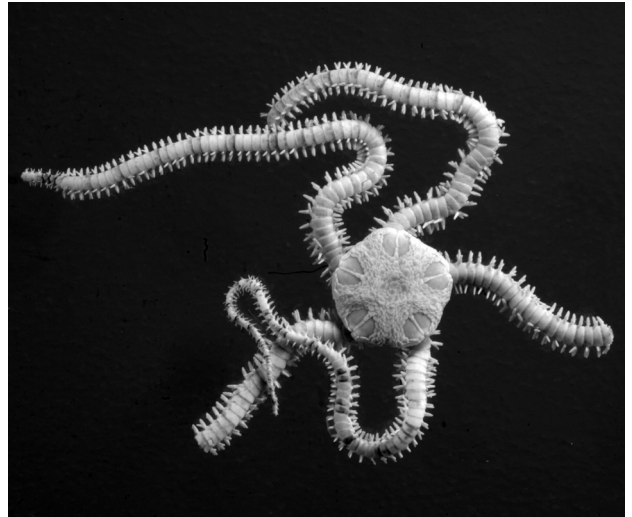


Fig. 1 - Holotype of *Amphioplus minutus* Tortonese 1980 from Somalia, Gesira (MZUF 341) (photo by S. Bambi).

Italy, (LI) Castiglioncello, 23.VII.1978, leg. F. Terzani, det. F. Terzani, 1 sp. (MZUF 2098)

Italy, (NA) Gulf of Naples, VIII.1876, leg. A. Targioni Tozzetti, det. E. Tortonese, 86 sp. (MZUF 186)

Italy, (NA) Gulf of Naples, IX.1874, leg. A. Targioni Tozzetti, det. E. Tortonese, 9 sp. (MZUF 225)

Italy, (NA) Gulf of Naples, IX.1892, pur. Stazione Zoologica Napoli, det. E. Tortonese, 6 sp. (MZUF 228)

Italy, (NA) Gulf of Naples, 1876, leg. ?, det. E. Tortonese, 29 sp. (MZUF 862)

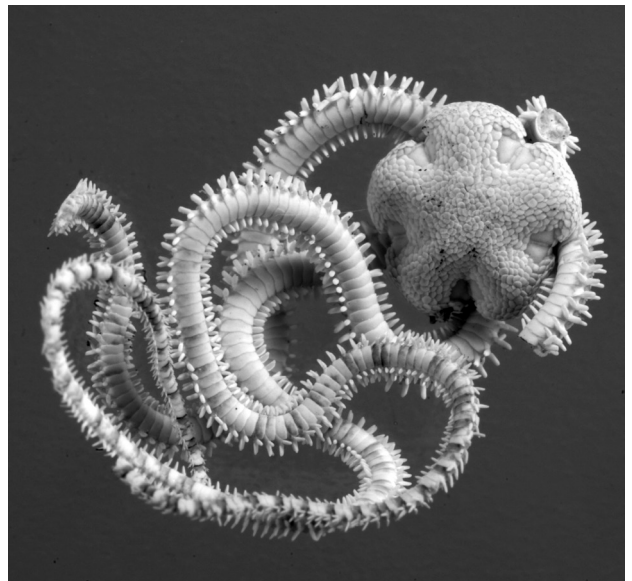


Fig. 2 - Holotype of *Amphioplus somaliensis* Tortonese 1980 from Somalia, Sar Uanle (MZUF 340) (photo by S. Bambi).

*Amphiura chiajei* Forbes 1843

Italy, (SP) Gulf of La Spezia, 1863-64, leg. A. Targioni Tozzetti, det. E. Tortonese, 4 sp. (MZUF 851)

Italy, (LI) Antignano, 1904, leg. Passerini, det. ?, 22 sp. (MZUF 854)

Italy, (LI) Livorno, 8.IX.1986, leg. I.S.T.I.P., det. M. Borri, 3 sp. (MZUF 908)

Italy, (LI) Quercianella, 12.VIII.1971, leg. A. Mascagni, det. G. Innocenti, 1 sp. (MZUF 2101)

Italy, (SS) Maddalena Is., Porto Camicie, -35 m, 29.VII.1881, leg. E.H. Giglioli, det. A. Senna and E. Tortonese, 1 sp. (MZUF 850)

Italy, (NA) Gulf of Naples, IX.1892, pur. Stazione Zoologica Napoli, det. M. Borri, 2 sp. (MZUF 855)

Italy, (NA) Gulf of Naples, IX.1892, pur. Stazione Zoologica Napoli, det. ?, 1 sp. (MZUF 861)

Italy, (TP) Egadi Isles, Lat. 38°05'N Long. 11°59'40"E, -400 m, R/N «Washington», 28.VIII.1881, leg. E.H. Giglioli, det. C. Bartolini Baldelli, 3 sp. (MZUF 853)

Italy, (ME) Messina, VIII-X.1878, leg. E.H. Giglioli & G.B. Toscanelli, det. G. Innocenti, 3 sp. (MZUF 2080)

Italy, Lat. 35°05'N Long. 11°16'E, R/N «Washington», 12.VII.1882, leg. E.H. Giglioli, det. C. Bartolini Baldelli, 2 sp. (MZUF 860)

Italy, Lat. 41°02'58"N Long. 8°32'20"E, -370-420 m, R/N «Washington», 3.VIII.1881, leg. E.H. Giglioli, det. C. Bartolini Baldelli, 1 sp. (MZUF 859)

Croatia, Istria, Crveni otok (Isola Rossa), -7 m, 26.V.1996, leg. C. Volpi & S. Cannicci, det. G. Innocenti, 2 sp. (MZUF 2126)

*Amphiura mediterranea* Lyman 1882

Italy, (VE) Venice lagoon, II.1872, don. A. Ninni, det. A. Senna, 1 sp. (MZUF 857)

Italy, (ME) Messina, VIII-X.1878, leg. E.H. Giglioli & G.B. Toscanelli, det. A. Senna, 1 sp. (MZUF 858)

*Amphiura* sp.

Italy, Lat. 39°58'32"N Long. 9°48'08"E, R/N «Washington», VIII.1881, leg. E.H. Giglioli, det. C. Bartolini Baldelli, 1 sp. (MZUF 2111)

India, Paumben, VII.1889, leg. K. Fristedt, det. A. Targioni Tozzetti and A. Senna, 3 sp. (MZUF 856)

India, Paumben, VII.1889, leg. K. Fristedt, det. A. Targioni Tozzetti and A. Senna, 2 sp. (MZUF 863)

Argentina, Tierra del Fuego, Capo Domingo, tide zone, 12.I.1974, leg. M.L. Azzaroli (G.R.S.T.S.), det. M.L. Azzaroli, 1 sp. (MZUF 852)

## Family OPHIACTIDAE Matsumoto 1915

*Ophiactis savignyi* (Müller & Troschel 1842)

Saudi Arabia, Jeddah, Sharm Obhor, IV.1977, leg. G.R.S.T.S., det. E. Tortonese, 10 sp. (MZUF 800)

Somalia, Sar Uanle, XII.1976, leg. G. Chelazzi, S. Turillazzi & M. Vannini, det. E. Tortonese, 16 sp. (MZUF 342)

Somalia, Marayek, 1879, don. Prince Tommaso, det. A. Senna, 4 sp. (MZUF 799)

Somalia, Gesira, IX-X.1979, leg. M. Vannini, det. ?, 8 sp. (MZUF 2090)

Ecuador, Galapagos Is., Duncan Is., -15 m, leg. G.R.S.T.S., det. M.L. Azzaroli, 10 sp. (MZUF 234)

*Ophiactis virens* (M. Sars 1857)

Italy, (NA) Gulf of Naples, IX.1874, leg. G. Cavanna, det. E. Tortonese, 2 sp. (MZUF 226)

Italy, (NA) Gulf of Naples, IX.1892, pur. Stazione Zoologica Napoli, det. ?, 4 sp. (MZUF 227)

*Ophiopholis aculeata* (L. 1767)

Russia, White Sea, <1899, don. B.V. Sukatschhoff, det. ?, 1 sp. (MZUF 796)

USA, Massachusetts, Bay of Fundy, 1881, don. the U.S. National Museum, Smithsonian Institution, det. A. Senna, 1 sp. (MZUF 797)

USA, Massachusetts, Bay of Fundy, 1881, don. the U.S. National Museum, Smithsonian Institution, det. A. Senna, 12 sp. (MZUF 798)

## Family OPHIOCOMIDAE Ljungman 1867

*Ophiarthrum elegans* Peters 1851

Moçambique, 1893, don. Berlin Museum, leg. W. Peters, det. W. Peters, 1 sp. (MZUF 872) SYNTYPUS! (Fig. 3)

Kenya, Mida Creek, Uyombo, X.1990, leg. M. Borri, det. M. Borri, 1 sp. (MZUF 1480)

Kenya, Vipingo, XI-XII.1993, leg. M. Borri & C. Volpi, det. M. Borri, 2 sp. (MZUF 1481)

Kenya, Shimoni, XI-XII.1993, leg. M. Borri & C. Volpi, det. M. Borri, 2 sp. (MZUF 1482)

Samoa Is., IV.1889, pur. C.A. Pohl, det. A. Targioni Tozzetti and A. Senna, 1 sp. (MZUF 871)

*Ophiarthrum lymani* de Loriol 1893

Kenya, Ngomeni, X.1990, leg. M. Borri, det. M. Borri, 1 sp. (MZUF 1483)

*Ophiocoma alexandri* Lyman 1860

Ecuador, Galapagos Is., Isabela Is., Caleba Tagus, 3.I.1972, leg. G.R.S.T.S., det. M.L. Azzaroli, 1 sp. (MZUF 269)

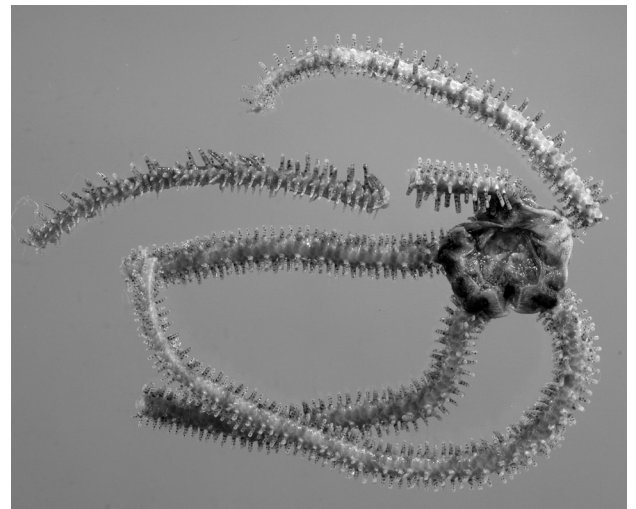


Fig. 3 - Syntype of *Ophiarthrum elegans* Peters 1851 from Moçambique, donated by Berlin Museum in 1893 (MZUF 872) (photo by S. Bambi).

*Ophiocoma brevipes* Peters 1851

- Somalia, Gesira, XII.1976, leg. S.B.S., det. E. Tortonese, 1 sp. (MZUF 358)  
 Somalia, Sar Uanle, XII.1976, leg. S.B.S., det. E. Tortonese, 21 sp. (MZUF 359)  
 Kenya, Mida Creek, Uyombo, X.1990, leg. M. Borri, det. M. Borri, 3 sp. (MZUF 1468)  
 Kenya, Shimoni, XI-XII.1993, leg. M. Borri & C. Volpi, det. M. Borri, 6 sp. (MZUF 1470)  
 Kenya, Vipingo, XI-XII.1993, leg. M. Borri & C. Volpi, det. M. Borri, 3 sp. (MZUF 1469)

*Ophiocoma dentata* Müller & Troschel 1842

- Viti Is. (= Fiji Is.), IV.1889, pur. C.A. Pohl, det. A. Targioni Tozzetti and A. Senna, 1 sp. (MZUF 2000)

*Ophiocoma erinaceus* Müller & Troschel 1842

- Saudi Arabia, Jeddah, Obhor Creek, I.1978, leg. G.R.S.T.S., det. E. Tortonese, 3 sp. (MZUF 1610)  
 Somalia, Gesira, IX-X.1979, leg. M. Vannini, det. E. Tortonese, 3 sp. (MZUF 2103)  
 Somalia, Gesira, IX-X.1979, leg. M. Vannini, det. E. Tortonese, 1 sp. (MZUF 2102)  
 Somalia, Gesira, XII.1976, leg. S.B.S., det. E. Tortonese, 1 sp. (MZUF 2086)  
 Somalia, Sar Uanle, XII.1976, leg. S.B.S., det. E. Tortonese, 1 sp. (MZUF 352)  
 Kenya, Mombasa, reef, 5-23.IX.2000, leg. M. Borri & C. Volpi, det. M. Borri, 5 sp. (MZUF 2104)  
 Kenya, Vipingo, XI-XII.1993, leg. M. Borri & C. Volpi, det. M. Borri, 8 sp. (MZUF 1644)  
 Tonga Is., IV.1889, pur. C.A. Pohl, previous det. *Ophiocoma erinacea*, det. A. Senna, upd. R. Fareltri, 1 sp. (MZUF 1611)

*Ophiocoma pica* Müller & Troschel 1842

- Egypt, Mikawa Is., 30.IV.1980, leg. G. Adriani, det. ?, 2 sp. (MZUF 775)  
 Egypt, Shadwan Is., X.1965, Mares Expedition, det. E. Tortonese, 1 sp. (MZUF 1618)  
 Somalia, Gesira, IX-X.1979, leg. M. Vannini, det. E. Tortonese, 3 sp. (MZUF 2105)  
 Somalia, Gesira, IX-X.1979, leg. M. Vannini, det. E. Tortonese, 4 sp. (MZUF 2106)  
 Somalia, Gesira, X.1981, leg. M. Vannini, det. E. Tortonese, 7 sp. (MZUF 2107)  
 Somalia, Sar Uanle, XII.1976, leg. S.B.S., det. E. Tortonese, 2 sp. (MZUF 531)  
 Somalia, Sar Uanle, XII.1976, leg. S.B.S., det. E. Tortonese, 4 sp. (MZUF 351)

*Ophiocoma pusilla* (Brock 1888)

- Somalia, Gesira, X.1979, leg. M. Vannini, det. E. Tortonese, 2 sp. (MZUF 2023)  
 Kenya, Mida Creek, Uyombo, X.1990, leg. M. Borri, det. M. Borri, 1 sp. (MZUF 1466)  
 Kenya, Vipingo, XI-XII.1993, leg. M. Borri & C. Volpi, det. M. Borri, 1 sp. (MZUF 1467)

*Ophiocoma scolopendrina* (Lamarck 1816)

- Jordan, Aqaba, I.1975, leg. G.R.S.T.S., det. E. Tortonese, 7 sp. (MZUF 782)

Eritrea, near Massawa, Gurgussun, -1 m, I.1975, leg. L. Mara, det. ?, 2 sp. (MZUF 789)

- Saudi Arabia, Farasan Is., 11.IV.1984, leg. G.R.S.T.S., det. E. Tortonese, 1 sp. (MZUF 1637)  
 Saudi Arabia, Jeddah, IV.1977, leg. G.R.S.T.S., det. E. Tortonese, 1 sp. (MZUF 1614)  
 Saudi Arabia, Jeddah, Obhor Creek, IV.1977, leg. G.R.S.T.S., det. E. Tortonese, 6 sp. (MZUF 296)  
 Saudi Arabia, Jeddah, Obhor Creek, IV.1977, leg. G.R.S.T.S., det. E. Tortonese, 2 sp. (MZUF 1613)  
 Somalia, between Meragno and Durbo, 23.X.1973, leg. M.L. Azzaroli, det. E. Tortonese, 41 sp. (MZUF 780)  
 Somalia, Gesira, XII.1976, leg. S.B.S., det. E. Tortonese, 20 sp. (MZUF 354)  
 Somalia, Mogadishu, 1952-53, leg. U. Funaioli, det. E. Tortonese, 8 sp. (MZUF 876)  
 Somalia, Mogadishu, XII.1976, leg. S.B.S., det. E. Tortonese, 1 sp. (MZUF 353)  
 Somalia, Ras Filuck, 26.X.1973, leg. M.L. Azzaroli, det. E. Tortonese, 1 sp. (MZUF 781)  
 Somalia, Sar Uanle, XII.1976, leg. S.B.S., det. E. Tortonese, 17 sp. (MZUF 355)  
 Kenya, Mida Creek, Mida, X.1990, leg. M. Borri, det. M. Borri, 12 sp. (MZUF 1646)  
 Kenya, Mida Creek, Uyombo, X.1990, leg. M. Borri, det. M. Borri, 9 sp. (MZUF 1461)  
 Kenya, Mida Creek, Uyombo, X.1990, leg. M. Borri, det. M. Borri, 1 sp. (MZUF 1478)  
 Kenya, Mtwapa, XI-XII.1993, leg. M. Borri & C. Volpi, det. M. Borri, 20 sp. (MZUF 1465)  
 Kenya, Mtwapa, XI-XII.1993, leg. M. Borri & C. Volpi, det. M. Borri, 6 sp. (MZUF 1645)  
 Kenya, Ngomeni, X.1990, leg. M. Borri, det. M. Borri, 8 sp. (MZUF 1462)  
 Kenya, Shimoni, XI-XII.1993, leg. M. Borri & C. Volpi, det. M. Borri, 2 sp. (MZUF 1647)  
 Kenya, Vipingo, XI-XII.1993, leg. M. Borri & C. Volpi, det. M. Borri, 7 sp. (MZUF 1464)  
 Kenya, Watamu, X.1990, leg. M. Borri, det. M. Borri, 15 sp. (MZUF 1463)  
 Fiji Is., IV.1889, pur. C.A. Pohl, det. A. Targioni Tozzetti and A. Senna, 1 sp. (MZUF 1612)  
 Fiji Is., IV.1889, pur. C.A. Pohl, det. A. Targioni Tozzetti and A. Senna, 1 sp. (MZUF 2119)  
 Patria?, <1860, don. Clot Bey, det. A. Targioni Tozzetti and A. Senna, 1 sp. (MZUF 2100)
- Ophiocoma valenciae* Müller & Troschel 1842  
 Somalia, Gesira, XII.1976, leg. S.B.S., det. E. Tortonese, 19 sp. (MZUF 356)  
 Somalia, Sar Uanle, XII.1976, leg. S.B.S., det. E. Tortonese, 29 sp. (MZUF 357)  
 Somalia, Gesira, X.1979, leg. S.B.S., det. E. Tortonese, 2 sp. (MZUF 2085)  
 Somalia, date?, leg. ?, det. E. Tortonese, 7 sp. (MZUF 790)  
 Kenya, Watamu, X.1990, leg. M. Borri, det. M. Borri, 2 sp. (MZUF 1471)  
 Kenya, Shimoni, XI-XII.1993, leg. M. Borri & C. Volpi, det. M. Borri, 1 sp. (MZUF 1651)

*Ophiocoma* sp.

- Somalia, Gesira, IX-X.1979, leg. M. Vannini, det. ?, 25 sp. (MZUF 2109)



Somalia, Gesira, X.1981, leg. M. Vannini, det. ?, 25 sp. (MZUF 2108)

Somalia, between Durbo and Meragno, X.1973, leg. M.L. Azzaroli, det. G. Innocenti, 19 sp. (MZUF 1987)

Kenya, Malindi, Kirepwe Is., 14.IX.2000, leg. S. Cianfanelli & E. Talenti, det. G. Innocenti, 2 sp. (MZUF 2136)

Kenya, Mombasa, lagoon, 5-23.IX.2000, leg. M. Borri & C. Volpi, det. G. Innocenti, 1 sp. (MZUF 2004)

Kenya, Mombasa, lagoon, 5-23.IX.2000, leg. M. Borri & C. Volpi, det. G. Innocenti, 1 sp. (MZUF 2003)

Kenya, Mombasa, lagoon, 5-23.IX.2000, leg. M. Borri & C. Volpi, det. G. Innocenti, 2 sp. (MZUF 2002)

Kenya, Mombasa, reef, 5-23.IX.2000, leg. M. Borri & C. Volpi, det. G. Innocenti, 8 sp. (MZUF 1994)

Kenya, Mombasa, reef, 5-23.IX.2000, leg. M. Borri & C. Volpi, det. G. Innocenti, 9 sp. (MZUF 1988)

Kenya, Mombasa, reef, 5-23.IX.2000, leg. M. Borri & C. Volpi, det. G. Innocenti, 2 sp. (MZUF 1992)

Kenya, Mombasa, reef, 5-23.IX.2000, leg. M. Borri & C. Volpi, det. G. Innocenti, 1 sp. (MZUF 2025)

Kenya, Mombasa, reef, 5-23.IX.2000, leg. M. Borri & C. Volpi, det. G. Innocenti, 3 sp. (MZUF 1993)

Tanzania, Pemba, coral reef, VIII.1995, leg. F. Tarducci, det. G. Innocenti, 1 sp. (MZUF 2040)

Maldives, Velassaru Is., II.1976, leg. M.L. Azzaroli, det. ?, 1 sp. (MZUF 1617)

Ceylon (= Sri Lanka), III.1889, leg. K. Fristedt, det. A. Targioni Tozzetti, 1 sp. (MZUF 875)

Ceylon (= Sri Lanka), 6 fathoms, III.1889, leg. K. Fristedt, det. A. Targioni Tozzetti, 1 sp. (MZUF 1615)

Ceylon (= Sri Lanka), 7 fathoms, III.1889, leg. K. Fristedt, det. A. Targioni Tozzetti, 1 sp. (MZUF 1616)

Philippines, Palawan Is., St. Paul S.N.P., 20-27.II.1991, leg. M. Borri & C. Volpi, det. G. Innocenti, 5 sp. (MZUF 1991)

#### *Ophiocomina nigra* (Abildgard 1789)

Italy, (LI) Livorno, Lat. 42°57'91"N Long. 10°27'29"E, -41 m, 30.IV.1987, leg. I.S.T.I.P., det. M. Borri, 1 sp. (MZUF 1322)

Italy, (LI) Livorno, Lat. 43°04'46"N Long. 10°28'41"E, -48 m, 30.IV.1987, leg. I.S.T.I.P., det. M. Borri, 2 sp. (MZUF 1323)

Italy, (CA) southern Sardinia, 25.VI.1996, leg. M. Borri & C. Volpi, det. G. Eva, 1 sp. (MZUF 1877)

Italy, (CA) southern Sardinia, 3.V.1988, leg. M. Borri & C. Volpi, det. G. Eva, 2 sp. (MZUF 1878)

Italy, (CA) Capo di Pula, 10.VII.1997, leg. M. Borri & C. Volpi, det. G. Eva, 1 sp. (MZUF 1879)

#### *Ophiomastix annulosa* (Lamarck 1816)

Republic of Palau, IV.1889, pur. C.A. Pohl, det. A. Targioni Tozzetti and A. Senna, 1 sp. (MZUF 1997)

#### *Ophiomastix caryophyllata* Lütken 1869

Kenya, Vipingo, XI-XII.1993, leg. M. Borri & C. Volpi, det. M. Borri, 1 sp. (MZUF 1479)

#### *Ophiomastix koehleri* Devaney 1977

Kenya, Shimoni, XI-XII.1993, leg. M. Borri & C. Volpi, det. M. Borri, 1 sp. (MZUF 1472)

Kenya, Vipingo, XI-XII.1993, leg. M. Borri & C. Volpi, det. M. Borri, 1 sp. (MZUF 1473)

Kenya, Watamu, X.1990, leg. M. Borri, det. M. Borri, 1 sp. (MZUF 1474)

#### *Ophiomastix mixta* Lütken 1869

Samoa Is., IV.1889, pur. C.A. Pohl, det. A. Targioni Tozzetti and A. Senna, 1 sp. (MZUF 873)

#### *Ophiomastix venosa* Peters 1851

Somalia, Gesira, XII.1976, leg. S.B.S., det. E. Tortonese, 3 sp. (MZUF 360)

Somalia, Sar Uanle, XII.1976, leg. S.B.S., det. E. Tortonese, 3 sp. (MZUF 361)

Kenya, Mida Creek, Uyombo, X.1990, leg. M. Borri, det. M. Borri, 3 sp. (MZUF 1475)

Kenya, Shimoni, XI-XII.1993, leg. M. Borri & C. Volpi, det. M. Borri, 8 sp. (MZUF 1476)

Kenya, Vipingo, XI-XII.1993, leg. M. Borri & C. Volpi, det. M. Borri, 6 sp. (MZUF 1477)

#### *Ophiopsila aranea* Forbes 1843

Italy, (LI) Pianosa Is., Punta Brigantina, -30 m, VIII.1970, leg. A. Olschki, det. ?, 1 sp. (MZUF 187)

Italy, (CA) southern Sardinia, 26.VI.1996, leg. M. Borri & C. Volpi, det. G. Eva, 1 sp. (MZUF 1875)

Italy, (NA) Gulf of Naples, IX.1892, pur. Stazione Zoologica Napoli, det. ?, 3 sp. (MZUF 185)

Italy, (NA) Gulf of Naples, IX.1892, pur. Stazione Zoologica Napoli, det. ?, 1 sp. (MZUF 224)

Adriatic Sea, 1867, pur. L.W. Schaffuss, det. A. Targioni Tozzetti, 1 sp. (MZUF 223)

#### *Ophiopsila* sp.

Italy, (LI) Livorno, V.1986, leg. I.S.T.I.P., det. M. Borri, 1 sp. (MZUF 1064)

Ceylon (= Sri Lanka), 6 fathoms, III.1889, leg. K. Fristedt, det. A. Targioni Tozzetti, 3 sp. (MZUF 2118)

#### Family OPHIONEREIDIDAE Ljungman 1867

##### *Ophionereis dubia* (Müller & Troschel 1842)

Somalia, Mogadishu, XII.1976, leg. G. Chelazzi, S. Turillazzi & M. Vannini, det. E. Tortonese, 2 sp. (MZUF 349)

Somalia, Ras Filuck, 26.X.1973, leg. M.L. Azzaroli, det. E. Tortonese, 1 sp. (MZUF 779)

Somalia, Sar Uanle, XII.1976, leg. G. Chelazzi, S. Turillazzi & M. Vannini, det. E. Tortonese, 5 sp. (MZUF 350)

#### Family OPHIOTRICHIDAE Ljungman 1867

##### *Macrophiothrix aspidota* (Müller & Troschel 1842)

Somalia, Sar Uanle, XII.1976, leg. S.B.S., det. E. Tortonese, 2 sp. (MZUF 347)

Samoa Is., IV.1889, pur. C.A. Pohl, previous det. *Ophiiothrix aspidota*, det. A. Senna, upd. R. Fareltri, 1 sp. (MZUF 849)

##### *Macrophiothrix demessa* (Lyman 1861)

Saudi Arabia, Jeddah, Obhor Creek, IV.1977, leg. G.R.S.T.S., det. E. Tortonese, 2 sp. (MZUF 1609)

*Macrophiothrix hirsuta* (Müller & Troschel 1842)

Somalia, Marayek, VI.1879, leg. Prince Tommaso, previous det. *Ophiothrix hirsuta*, det. A. Targioni Tozzetti and A. Senna, upd. R. Fareltri, 1 sp. (MZUF 844)

*Macrophiothrix longipeda* (Lamarck 1816)

Somalia, Gesira, XII.1976, leg. S.B.S., det. E. Tortonese, 1 sp. (MZUF 348)

Samoa Is., IV.1889, pur. C.A. Pohl, previous det. *Ophiothrix longipeda*, det. A. Senna, upd. R. Fareltri, 2 sp. (MZUF 823)

*Macrophiothrix nereidina* (Lamarck 1816)

Somalia, Sar Uanle, XII.1976, leg. S.B.S., previous det. *Ophiothrix nereidina*, det. E. Tortonese, upd. G. Innocenti, 1 sp. (MZUF 345)

*Macrophiothrix propinqua* (Lyman 1861)

Somalia, Gesira, XII.1976, leg. S.B.S., previous det. *Ophiothrix propinqua*, det. E. Tortonese, upd. G. Innocenti, 1 sp. (MZUF 346)

Australia, IV.1889, pur. C.A. Pohl, previous det. *Ophiothrix propinqua*, det. A. Targioni Tozzetti and A. Senna, upd. G. Innocenti, 1 sp. (MZUF 841)

*Macrophiothrix* sp.

Saudi Arabia, Farasan Is., IV.1984, leg. G.R.S.T.S., det. E. Tortonese, 2 sp. (MZUF 2028)

*Ophiothrix fragilis* (Abildgaard 1789)

Italy, (SP) La Spezia, 1863, leg. A. Targioni Tozzetti, det. ?, 2 sp. (MZUF 822)

Italy, (LI) Capraia Is., between Punta della Teia and Punta della Manza, coralligenous bottom, -9 m, 28.V.1998, leg. G. Innocenti, det. G. Innocenti, 2 sp. (MZUF 2043)

Italy, (LI) Elba Is., Portoferraio, II.1882, don. V. Toscanelli, det. A. Senna and E. Tortonese, 1 sp. (MZUF 816)

Italy, (LI) Elba Is., Capo d'Enfola, -0.8 m, VIII.1980, leg. E. Talenti, det. G. Innocenti, 1 sp. (MZUF 2065)

Italy, (LI) Pianosa Is., Villa Agrippa, -1 m, 6.VIII.1970, leg. A. Ceccanti & L. Chelazzi, det. ?, 2 sp. (MZUF 818)

Italy, (LI) Pianosa Is., Scoglio della Scola, -9 m, 3.V.1970, leg. M.L. Azzaroli, det. G. Innocenti, 1 sp. (MZUF 2041)

Italy, (LI) Pianosa Is., Punta Brigantina, VIII.1970, leg. M.L. Azzaroli, det. ?, 1 sp. (MZUF 840)

Italy, (LI) Pianosa Is., Punta Brigantina, -15 m, 1.VI.1970, leg. A. Ceccanti, det. G. Innocenti, 1 sp. (MZUF 2050)

Italy, (LI) Pianosa Is., Punta Brigantina, -15 m, 1.VI.1970, leg. A. Ceccanti, det. G. Innocenti, 1 sp. (MZUF 2076)

Italy, (LI) Pianosa Is., Cala San Giovanni, -4 m, 21.IV.1971, leg. ?, det. G. Innocenti, 1 sp. (MZUF 2057)

Italy, (LI) Pianosa Is., Roman Harbour, -7 m, 30.VIII.1970, leg. M.L. Azzaroli, det. ?, 9 sp. (MZUF 813)

Italy, (LI) Pianosa Is., Scoglio della Scola, 3.V.1970, leg. A. Ceccanti, det. ?, 4 sp. (MZUF 829)

Italy, (LI) Secche della Meloria, IV.1970, leg. M.L. Azzaroli, det. ?, 44 sp. (MZUF 827)

Italy, (LI) Castiglioncello, 23.VII.1978, leg. F. Terzani, det. F. Terzani, 2 sp. (MZUF 2026)

Italy, (LI) Castiglioncello, 16.VII.1978, leg. F. Terzani, det. F. Terzani, 1 sp. (MZUF 2097)

Italy, (LI) Quercianella harbour, -9 m, 6.X.1989, leg. G. Buracchi, P.L. Finotello & A. Lazzarretti, det. ?, 6 sp. (MZUF 1628)

Italy, (LI) Livorno, 1986, leg. I.S.T.I.P., det. G. Innocenti, 1 sp. (MZUF 2212)

Italy, (LI) Livorno, -6.5 m, 20.X.1989, leg. A. Lazzarretti, M. Borri & A. Doricchi, det. G. Innocenti, 2 sp. (MZUF 2079)

Italy, (LI) Livorno, -7 m, 27.X.1989, leg. P.L. Finotello & A. Lazzarretti, det. G. Innocenti, 5 sp. (MZUF 2077)

Italy, (LI) Livorno, Lat. 42°58'50"N Long. 10°21'50"E, -108 m, 30.IV.1987, leg. I.S.T.I.P., det. M. Borri, 31 sp. (MZUF 1336)

Italy, (LI) Livorno, Lat. 43°02'81"N Long. 10°19'37"E, -113 m, 30.IV.1987, leg. I.S.T.I.P., det. M. Borri, 1 sp. (MZUF 1083)

Italy, (LI) Livorno, Lat. 43°27'59"N Long. 10°00'03"E, -139 m, 23.IV.1987, leg. I.S.T.I.P., det. M. Borri, 1 sp. (MZUF 1325)

Italy, (LI) Livorno, 17.V.1973, leg. M.L. Azzaroli, det. G. Innocenti, 2 sp. (MZUF 2127)

Italy, (LI) Quercianella, VIII.1972, leg. A. Mascagni, det. F. Terzani, 2 sp. (MZUF 2094)

Italy, (LI) Baratti, 6.II.1966, leg. C. De Giuli, Mantellassi & Gori, det. G. Innocenti, 1 sp. (MZUF 2)

Italy, (LI) Baratti, 13.II.1966, leg. C. De Giuli, Mantellassi & Gori, det. G. Innocenti, 1 sp. (MZUF 13)

Italy, (LI) Baratti, -40 m, 5.X.1969, leg. M.L. Azzaroli, det. G. Innocenti, 2 sp. (MZUF 2082)

Italy, (GR) Montecristo Is., Cala Maestra, 15.VII.1979, leg. A. Camperio, det. G. Innocenti, 6 sp. (MZUF 2096)

Italy, (GR) Punta Ala, sandy and muddy bottom, -3 m, 4.VII.1976, leg. M. Borri, A. Gigli, P. Notarbartolo & P. Solaini, det. G. Innocenti, 5 sp. (MZUF 2053)

Italy, (GR) Punta Ala, Lo Sparviero, 18.VIII.1978, leg. M. Borri, det. E. Tortonese, 2 sp. (MZUF 774)

Italy, (GR) Punta Ala, Lo Sparviero, 18.VIII.1978, leg. M. Borri, det. G. Innocenti, 1 sp. (MZUF 2069)

Italy, (GR) Punta Ala, Lo Sparviero, 1976-1978, leg. M. Borri, det. G. Innocenti, 12 sp. (MZUF 2070)

Italy, (GR) Punta Ala, Lo Sparviero, 1976-1978, leg. M. Borri, det. G. Innocenti, 1 sp. (MZUF 2064)

Italy, (GR) Formiche di Grosseto, 14.VIII.1978, leg. M. Borri, det. G. Innocenti, 1 sp. (MZUF 2072)

Italy, (GR) Argentario, -6 m, 17.VI.1989, leg. M. Borri, A. Lazzarretti & P.L. Finotello, det. M. Borri, 1 sp. (MZUF 1626)

Italy, (GR) Argentario, -6 m, 5.VI.1989, leg. M. Borri, A. Lazzarretti & S. Viciani, det. M. Borri, 5 sp. (MZUF 1629)

Italy, (GR) Gulf of Follonica, -2 m, 30.IX.1989, leg. Bertolotti & A. Lazzarretti, det. M. Borri, 1 sp. (MZUF 1630)

Italy, (GR) Argentario, Porto Santo Stefano, 29.XII.1971, leg. ?, det. M. Borri, 1 sp. (MZUF 1635)

Italy, (SS) Maddalena Is., Porto Camicie, VIII-IX.1881, leg. E.H. Giglioli, previous det. *Ophiothrix echinata* Müller & Troschel, det. A. Senna, upd. R. Fareltri, 12 sp. (MZUF 828)

- Italy, (SS) Tavolara Is., VII.1970, leg. R. Pirozzi, det. R. Fareltri and M. Borri, 4 sp. (MZUF 825)
- Italy, (NU) Capo Comino, 29.IV.1979, leg. B. Lanza *et al.*, det. G. Innocenti, 1 sp. (MZUF 2128)
- Italy, (CA) southern Sardinia, 18.VI.1996, leg. M. Borri & C. Volpi, det. G. Eva, 4 sp. (MZUF 1874)
- Italy, (NA) Gulf of Naples, 1871, leg. A. Targioni Tozzetti, det. A. Senna, 6 sp. (MZUF 833)
- Italy, (NA) Gulf of Naples, 1871, leg. Gasco, det. A. Senna, 12 sp. (MZUF 810)
- Italy, (NA) Gulf of Naples, IX.1874, leg. G. Cavanna, det. A. Senna, 8 sp. (MZUF 845)
- Italy, (NA) Gulf of Naples, IX.1892, pur. Stazione Zoologica Napoli, det. ?, 2 sp. (MZUF 811)
- Italy, (NA) Gulf of Naples, IX.1892, pur. Stazione Zoologica Napoli, det. ?, 2 sp. (MZUF 812)
- Italy, (NA) Gulf of Naples, IX.1892, pur. Stazione Zoologica Napoli, det. ?, 1 sp. (MZUF 820)
- Italy, (NA) Naples, IX.1874, leg. G. Cavanna, det. A. Senna, 3 sp. (MZUF 815)
- France, Banyuls sur Mer, 1960, leg. B. Lanza & S. Carfi, det. ?, 3 sp. (MZUF 821)
- France, Corsica, Fautea, VII.1974, leg. M. Lanza, det. G. Innocenti, 4 sp. (MZUF 2081)
- Croatia, Istria, Vestar (Vestre), 27.V.1996, leg. C. Volpi, S. Cannicci & G. Innocenti, det. G. Innocenti, 1 sp. (MZUF 2078)
- Croatia, Istria, Crveni otok (Isola Rossa), -7 m, 26.V.1996, leg. C. Volpi & S. Cannicci, det. G. Innocenti, 16 sp. (MZUF 2068)
- Germany, Helgoland, IX.1865, leg. P. Marchi, det. A. Targioni Tozzetti and A. Senna, 2 sp. (MZUF 848)
- Baltic Sea, <1843, leg. ?, det. ?, 13 sp. (MZUF 846)
- Baltic Sea, IV.1889, pur. C.A. Pohl, det. A. Targioni Tozzetti and A. Senna, 1 sp. (MZUF 847)
- Ophiothrix quinquemaculata* Delle Chiaje 1829  
Italy, upper Adriatic Sea, oil plant, VI.2002, leg. M. Borri & C. Volpi, det. G. Innocenti, 30 sp. (MZUF 2137)
- Italy, (LI) Livorno, Lat. 42°50'64"N Long. 10°02'08"E, -88 m, 9.V.1986, leg. I.S.T.I.P., det. M. Borri, 1 sp. (MZUF 1074)
- Italy, (LI) Livorno, Lat. 42°53'13"N Long. 10°08'53"E, -119 m, V.1986, leg. I.S.T.I.P., det. M. Borri, 2 sp. (MZUF 1058)
- Italy, (LI) Livorno, Lat. 42°55'81"N Long. 10°21'55"E, -94 m, 9.V.1986, leg. I.S.T.I.P., det. M. Borri, 15 sp. (MZUF 1080)
- Italy, (LI) Livorno, Lat. 42°55'81"N Long. 10°22'46"E, -87 m, 30.IV.1987, leg. I.S.T.I.P., det. M. Borri, 17 sp. (MZUF 1328)
- Italy, (LI) Livorno, Lat. 42°57'91"N Long. 10°27'29"E, -41 m, 30.IV.1987, leg. I.S.T.I.P., det. M. Borri, 8 sp. (MZUF 1326)
- Italy, (LI) Livorno, Lat. 42°58'11"N Long. 09°50'06"E, -155 m, 9.V.1986, leg. I.S.T.I.P., det. M. Borri, 2 sp. (MZUF 1057)
- Italy, (LI) Livorno, Lat. 42°58'50"N Long. 10°21'50"E, -108 m, 30.IV.1987, leg. I.S.T.I.P., det. M. Borri, 3 sp. (MZUF 1329)
- Italy, (LI) Livorno, Lat. 43°00'74"N Long. 09°50'56"E, -100 m, 23.IV.1987, leg. I.S.T.I.P., det. M. Borri, 8 sp. (MZUF 1104)
- Italy, (LI) Livorno, Lat. 43°02'06"N Long. 10°07'64"E, -144 m, 8.IX.1986, leg. I.S.T.I.P., det. M. Borri, 1 sp. (MZUF 922)
- Italy, (LI) Livorno, Lat. 43°02'25"N Long. 10°17'04"E, -118 m, 5.IX.1986, leg. I.S.T.I.P., det. M. Borri, 23 sp. (MZUF 932)
- Italy, (LI) Livorno, Lat. 43°02'81"N Long. 10°19'37"E, -113 m, 30.IV.1986, leg. I.S.T.I.P., det. M. Borri, 47 sp. (MZUF 1081)
- Italy, (LI) Livorno, Lat. 43°04'27"N Long. 10°18'81"E, -113 m, 5.IX.1986, leg. I.S.T.I.P., det. M. Borri, 20 sp. (MZUF 919)
- Italy, (LI) Livorno, Lat. 43°04'36"N Long. 10°28'41"E, -48 m, 30.IV.1987, leg. I.S.T.I.P., det. M. Borri, 8 sp. (MZUF 1327)
- Italy, (LI) Livorno, Lat. 43°04'62"N Long. 10°11'76"E, -129 m, 9.IX.1986, leg. I.S.T.I.P., det. M. Borri, 4 sp. (MZUF 926)
- Italy, (LI) Livorno, Lat. 43°06'14"N Long. 10°12'12"E, -126 m, 30.IV.1986, leg. I.S.T.I.P., det. M. Borri, 2 sp. (MZUF 1068)
- Italy, (LI) Livorno, Lat. 43°06'14"N Long. 10°12'12"E, -126 m, 9.IX.1986, leg. I.S.T.I.P., det. M. Borri, 1 sp. (MZUF 929)
- Italy, (LI) Livorno, Lat. 43°06'79"N Long. 09°48'62"E, -145 m, 8.IX.1986, leg. I.S.T.I.P., det. M. Borri, 2 sp. (MZUF 911)
- Italy, (LI) Livorno, Lat. 43°06'99"N Long. 10°20'97"E, -156 m, 8.IX.1986, leg. I.S.T.I.P., det. M. Borri, 7 sp. (MZUF 935)
- Italy, (LI) Livorno, Lat. 43°06'99"N Long. 10°20'97"E, -156 m, 9.IX.1986, leg. I.S.T.I.P., det. M. Borri, 2 sp. (MZUF 931)
- Italy, (LI) Livorno, Lat. 43°09'71"N Long. 09°55'12"E, -207 m, 8.V.1986, leg. I.S.T.I.P., det. M. Borri, 3 sp. (MZUF 1066)
- Italy, (LI) Livorno, Lat. 43°12'89"N Long. 10°15'79"E, -118 m, 29.IV.1987, leg. I.S.T.I.P., det. M. Borri, 34 sp. (MZUF 1330)
- Italy, (LI) Livorno, Lat. 43°13'88"N Long. 10°23'49"E, -49 m, 5.IX.1986, leg. I.S.T.I.P., det. M. Borri, 1 sp. (MZUF 923)
- Italy, (LI) Livorno, Lat. 43°15'24"N Long. 10°20'03"E, -29 m, 30.IV.1986, leg. I.S.T.I.P., det. M. Borri, 2 sp. (MZUF 1072)
- Italy, (LI) Livorno, Lat. 43°16'23"N Long. 10°04'92"E, -145 m, 23.IV.1987, leg. I.S.T.I.P., det. M. Borri, 1 sp. (MZUF 1334)
- Italy, (LI) Livorno, Lat. 43°17'53"N Long. 10°09'48"E, -127 m, 5.V.1986, leg. I.S.T.I.P., det. M. Borri, 5 sp. (MZUF 1070)
- Italy, (LI) Livorno, Lat. 43°21'43"N Long. 09°58'36"E, -154 m, 23.IV.1987, leg. I.S.T.I.P., det. M. Borri, 1 sp. (MZUF 1335)
- Italy, (LI) Livorno, Lat. 43°23'98"N Long. 10°22'28"E, -32 m, 30.IV.1986, leg. I.S.T.I.P., det. M. Borri, 1 sp. (MZUF 1073)
- Italy, (LI) Livorno, Lat. 43°24'66"N Long. 10°03'22"E, -136 m, 23.IV.1986, leg. I.S.T.I.P., det. M. Borri, 6 sp. (MZUF 1331)

- Italy, (LI) Livorno, Lat. 43°26'07"N Long. 10°14'41"E, -77 m, 5.IX.1986, leg. I.S.T.I.P., det. M. Borri, 2 sp. (MZUF 915)
- Italy, (LI) Livorno, Lat. 43°26'47"N Long. 10°03'41"E, -101 m, 6.V.1986, leg. I.S.T.I.P., det. M. Borri, 2 sp. (MZUF 1079)
- Italy, (LI) Livorno, Lat. 43°26'85"N Long. 09°55'05"E, -141 m, 24.IV.1987, leg. I.S.T.I.P., det. M. Borri, 2 sp. (MZUF 1333)
- Italy, (LI) Livorno, Lat. 43°27'59"N Long. 10°00'03"E, -139 m, 23.IV.1987, leg. I.S.T.I.P., det. M. Borri, 2 sp. (MZUF 1332)
- Italy, (LI) Livorno, Lat. 43°29'54"N Long. 09°59'43"E, -146 m, 6.IX.1986, leg. I.S.T.I.P., det. M. Borri, 2 sp. (MZUF 934)
- Italy, (LI) Livorno, Lat. 43°54'40"N Long. 10°06'23"E, -15 m, 2.IX.1986, leg. I.S.T.I.P., det. M. Borri, 1 sp. (MZUF 912)
- Italy, (LI) Livorno, Lat. 45°56'15"N Long. 10°23'22"E, -87 m, 5.IX.1986, leg. I.S.T.I.P., det. M. Borri, 5 sp. (MZUF 925)
- Italy, (LI) Livorno, 1986, leg. I.S.T.I.P., det. G. Innocenti, 9 sp. (MZUF 2211)
- Italy, (LI) Livorno, date?, leg. I.S.T.I.P., det. G. Innocenti, 10 sp. (MZUF 2074)
- Italy, (LI) Livorno, spring 1987, leg. M. Borri, det. G. Innocenti, 5 sp. (MZUF 2061)
- Italy, (LI) Livorno, spring 1987, leg. M. Borri, det. G. Innocenti, 1 sp. (MZUF 2045)
- Italy, (LI) Livorno, spring 1987, leg. M. Borri, det. G. Innocenti, 2 sp. (MZUF 2042)
- Italy, (LI) Castiglioncello, 1931, leg. ?, det. G. Innocenti, 1 sp. (MZUF 2066)
- Italy, (GR) Argentario, Rossa Is., 9.I.1972, leg. V. Wiechmann, det. ?, 2 sp. (MZUF 819)
- Italy, (SS) Maddalena Is., Porto Camicie, 29.VII.1881, R/N «Washington», leg. E.H. Giglioli, det. C. Bartolini Baldelli, 1 sp. (MZUF 817)
- Italy, (SS) Maddalena Is., Porto Camicie, 29.VII.1881, R/N «Washington», leg. E.H. Giglioli, det. C. Bartolini Baldelli, 4 sp. (MZUF 832)
- Italy, (CA) Cagliari, VI.2000, leg. M. Borri & C. Volpi, det. G. Innocenti, 4 sp. (MZUF 2046)
- Italy, (CA) southern Sardinia, 17.VI.1996, leg. M. Borri & C. Volpi, det. G. Eva, 1 sp. (MZUF 1880)
- Italy, (CA) Capo Spartivento, 9.VII.1997, leg. M. Borri & C. Volpi, det. G. Eva, 1 sp. (MZUF 1881)
- Italy, (NA) Gulf of Naples, IX.1874, leg. G. Cavanaugh, previous det. *Ophiothrix spinulosa* Risso, det. A. Targioni Tozzetti, *Ophiothrix echinata* M. Tr., det. A. Senna, upd. R. Fareltri, 2 sp. (MZUF 814)
- Italy, (NA) Gulf of Naples, VI.1897, pur. Stazione Zoologica Napoli, previous det. *Ophiothrix echinata*, det. ?, upd. G. Innocenti, 2 sp. (MZUF 1608)
- Italy, (TP) Mazara del Vallo, 14.IX.1984, leg. M. Borri, P. Mannini & C. Volpi, det. G. Innocenti, 2 sp. (MZUF 2089)
- Italy, (TP) Mazara del Vallo, 14.IX.1984, leg. M. Borri, P. Mannini & C. Volpi, det. G. Innocenti, 1 sp. (MZUF 2123)
- Italy, Lat. 35°57'N Long. 11°16'E, -120 m, R/N «Washington», 12.VIII.1882, leg. E.H. Giglioli, det. C. Bartolini Baldelli, 2 sp. (MZUF 826)
- Ophiothrix (Acanthophiothrix) scorpio* (Müller & Trotschel 1842)  
Somalia, Marayek, VI.1879, leg. Prince Tommaso, det. A. Targioni Tozzetti, 4 sp. (MZUF 836)
- Ophiothrix (Ophiothrix) ciliaris* (Lamarck 1816)  
Ceylon (= Sri Lanka), III.1889, leg. K. Fristedt, det. A. Targioni Tozzetti, 3 sp. (MZUF 2118)
- Ophiothrix (Ophiothrix) echinotecta* J.B. Balinsky 1957  
Somalia, Gesira, XII.1976, leg. S.B.S., det. E. Tortonese, 2 sp. (MZUF 344)
- Ophiothrix (Ophiothrix) spiculata* Le Conte 1851  
Ecuador, Galapagos Is., Barrington Is., 10.I.1972, leg. G.R.S.T.S., det. M.L. Azzaroli, 1 sp. (MZUF 265)  
Ecuador, Galapagos Is., Duncan Is., 5.I.1972, leg. G.R.S.T.S., det. M.L. Azzaroli, 2 sp. (MZUF 262)  
Ecuador, Galapagos Is., Fernandina Is., Punta Espinosa, 2.I.1972, leg. G.R.S.T.S., det. M.L. Azzaroli, 6 sp. (MZUF 264)  
Ecuador, Galapagos Is., Isabela Is., Tagus Bay, 2.I.1972, leg. G.R.S.T.S., det. M.L. Azzaroli, 1 sp. (MZUF 268)  
Ecuador, Galapagos Is., Seymour Is., N of Baltea, 29.XII.1971, leg. G.R.S.T.S., det. M.L. Azzaroli, 1 sp. (MZUF 267)
- Ophiothrix (Ophiothrix) trilineata* Lütken 1869  
Somalia, Sar Uanle, XII.1976, leg. S.B.S., det. E. Tortonese, 6 sp. (MZUF 343)  
Samoa Is., pur. C.A. Pohl, IV.1889, det. A. Targioni Tozzetti and A. Senna, 1 sp. (MZUF 831)
- Ophiothrix* sp.  
Italy, (LI) Elba Is., Capo d'Enfola, IV.1980, leg. S. Cianfanelli, det. G. Innocenti, 1 sp. (MZUF 2067)  
Italy, (LI) Quercianella harbour, 18.X.1989, leg. A. Lazzarotti, S. Viciani & C. Volpi, det. ?, 2 sp. (MZUF 1627)  
Italy, (GR) Talamone, 29.VI.1972, leg. Bellini, Cimini & Billi, det. ?, 2 sp. (MZUF 824)  
Eritrea, Near Massawa, Gurgussun, I.1975, leg. L. Mara, det. ?, 1 sp. (MZUF 788)  
Somalia, Marayek, VI.1879, leg. Prince Tommaso, det. A. Targioni Tozzetti, 1 sp. (MZUF 835)  
India, Paumben, VII.1889, leg. K. Fristedt, det. A. Targioni Tozzetti, 10 sp. (MZUF 834)  
India, Paumben, VII.1889, leg. K. Fristedt, det. A. Targioni Tozzetti, 1 sp. (MZUF 837)  
India, Paumben, 2 fathoms, VII.1889, leg. K. Fristedt, det. A. Targioni Tozzetti, 16 sp. (MZUF 838)  
Ceylon (= Sri Lanka), 6 fathoms, 1889, leg. K. Fristedt, det. A. Targioni Tozzetti, 1 sp. (MZUF 839)  
Ceylon (= Sri Lanka), 1889, leg. K. Fristedt, det. A. Targioni Tozzetti, 1 sp. (MZUF 842)  
Australia, pur. C.A. Pohl, IV.1889, det. A. Targioni Tozzetti and A. Senna, 1 sp. (MZUF 830)  
Australia, pur. C.A. Pohl, IV.1889, det. A. Targioni Tozzetti and A. Senna, 1 sp. (MZUF 843)  
Ecuador, Galapagos Is., Santa Cruz Is., 23.XII.1971, leg. G.R.S.T.S., det. M.L. Azzaroli, 4 sp. (MZUF 263)

Infraorder OPHIODERMATINA  
Smith, Paterson & Lafay 1995

Family OPHIODERMATIDAE Ljungman 1867

*Ophiopeza spinosa* (Ljungman 1867)

Somalia, Gesira, XII.1976, leg. S.B.S., det. E. Tortonese, 1 sp. (MZUF 363)

Somalia, Sar Uanle, XII.1976, leg. G. Chelazzi, S. Turillazzi & M. Vannini, previous det. *Ophiopeza fallax* Peters, det. E. Tortonese, upd. G. Innocenti, 2 sp. (MZUF 362)

Kenya, Mida Creek, Uyombo, X.1990, leg. M. Borri, previous det. *Ophiopeza fallax* Peters, det. M. Borri, upd. G. Innocenti, 1 sp. (MZUF 1486)

Kenya, Shimoni, XI-XII.1993, leg. M. Borri & C. Volpi, previous det. *Ophiopeza fallax* Peters, det. M. Borri, upd. G. Innocenti, 3 sp. (MZUF 1488)

Kenya, Vipingo, XI-XII.1993, leg. M. Borri & C. Volpi, previous det. *Ophiopeza fallax* Peters, det. M. Borri, upd. G. Innocenti, 1 sp. (MZUF 1487)

India, Paumben, 2 fathoms, VII.1889, leg. K. Fristedt, previous det. *Ophiopeza fallax* Peters, det. A. Targioni Tozzetti, upd. G. Innocenti, 1 sp. (MZUF 1619)

Fiji Is., IV.1889, pur. C.A. Pohl, previous det. *Ophiopeza fallax* Peters, det. A. Targioni Tozzetti and A. Senna, upd. G. Innocenti, 1 sp. (MZUF 1620)

*Ophiarachna affinis* de Loriol 1893

Somalia, Gesira, XII.1976, leg. S.B.S., det. E. Tortonese, 3 sp. (MZUF 364)

Somalia, Sar Uanle, XII.1976, leg. G. Chelazzi, S. Turillazzi & M. Vannini, det. E. Tortonese, 2 sp. (MZUF 365)

Samoa Is., IV.1889, pur. C.A. Pohl, det. A. Targioni Tozzetti and A. Senna, 1 sp. (MZUF 802)

*Ophiarachna incrassata* (Lamarck 1816)

Kenya, Shimoni, XI-XII.1993, leg. M. Borri & C. Volpi, det. M. Borri, 1 sp. (MZUF 1495)

Samoa Is., IV.1889, pur. C.A. Pohl, det. A. Targioni Tozzetti and A. Senna, 1 sp. (MZUF 2117)

*Ophiarachnella gorgonia* (Müller & Troschel 1842)

Somalia, Gesira, X.1979, leg. S.B.S., det. E. Tortonese, 4 sp. (MZUF 366)

Somalia, Gesira, X.1979, leg. S.B.S., det. E. Tortonese, 2 arms (MZUF 2087)

Somalia, Sar Uanle, XII.1976, leg. G. Chelazzi, S. Turillazzi & M. Vannini, det. E. Tortonese, 3 sp. (MZUF 367)

Kenya, Vipingo, XI-XII.1993, leg. M. Borri & C. Volpi, det. M. Borri, 2 sp. (MZUF 1648)

Kenya, Mombasa, reef, 5-23.IX.2000, leg. M. Borri & C. Volpi, det. G. Innocenti, 3 sp. (MZUF 1995)

Fiji Is., IV.1889, pur. C.A. Pohl, previous det. *Pectinura gorgonia*, det. A. Targioni Tozzetti and A. Senna, upd. R. Fareltri, 1 sp. (MZUF 801)

*Ophiarachnella septemspinosa* (Müller & Troschel 1842)

Kenya, Mida Creek, Uyombo, X.1990, leg. M. Borri, det. M. Borri, 1 sp. (MZUF 1484)

Kenya, Shimoni, XI-XII.1993, leg. M. Borri & C. Volpi, det. M. Borri, 8 sp. (MZUF 1485)

*Ophioderma longicaudum* (Retzius 1805)

Italy, (SP) Fiascherino, Lerici, 6.X.1969, leg. B. Lanza, det. ?, 1 sp. (MZUF 173)

Italy, (SP) La Spezia, 1863, leg. A. Targioni Tozzetti, previous det. *Ophiura laevis*, det. A. Senna, upd. E. Tortonese, 2 sp. (MZUF 175)

Italy, (LU) Viareggio, 1870, don. R. Ministry of Agriculture, Industry and Commerce, det. A. Targioni Tozzetti, 1 sp. (MZUF 196)

Italy, (LI) Castiglioncello, date?, leg. ?, det. ?, 1 sp. (MZUF 194)

Italy, (LI) Castiglioncello harbour, -7 m, 13.X.1989, leg. M. Borri, S. Viciani & A. Lazzeretti, det. ?, 1 sp. (MZUF 1631)

Italy, (LI) Elba Is., VIII-X.1878, leg. E.H. Giglioli & G.B. Toscanelli, det. A. Targioni Tozzetti, 1 sp. (MZUF 198)

Italy, (LI) Elba Is., summer 1967, leg. ?, det. G. Innocenti, 1 sp. (MZUF 867)

Italy, (LI) Gulf of Baratti, 21.IV.1968, leg. M.L. Azzaroli & S. Carfi, det. ?, 1 sp. (MZUF 172)

Italy, (LI) Gulf of Baratti, -3 m, 17.IX.1989, leg. A. Lazzeretti & Lanaioli, det. ?, 5 sp. (MZUF 1623)

Italy, (LI) Gulf of Baratti, 13.II.1966, leg. C. De Giulii & Mantellassi, det. G. Innocenti, 2 sp. (MZUF 12)

Italy, (LI) Livorno, -6.5 m, 20.X.1989, leg. M. Borri, A. Lazzeretti & A. Doricchi, det. G. Innocenti, 2 sp. (MZUF 2060)

Italy, (LI) Livorno, under Mascagni terrace, 17.V.1973, leg. M.L. Azzaroli, det. G. Innocenti, 1 sp. (MZUF 2052)

Italy, (LI) Pianosa Is., Villa Agrippa, 6.VIII.1970, leg. A. Ceccanti & L. Chelazzi, det. ?, 3 sp. (MZUF 184)

Italy, (LI) Pianosa Is., Roman Harbour, 30.VIII.1970, leg. M.L. Azzaroli, det. ?, 1 sp. (MZUF 177)

Italy, (LI) Quercianella, VIII.1972, leg. A. Mascagni, det. F. Terzani, 1 sp. (MZUF 2093)

Italy, (LI) Quercianella harbour, -9 m, 6.X.1989, leg. Buracchi, P.L. Finotello & A. Lazzeretti, det. ?, 6 sp. (MZUF 197)

Italy, (LI) Quercianella harbour, -6 m, 18.X.1989, leg. S. Viciani, A. Lazzeretti & C. Volpi, det. ?, 4 sp. (MZUF 1622)

Italy, (LI) Secche della Meloria, 21.IV.1970, leg. M.L. Azzaroli, det. ?, 3 sp. (MZUF 180)

Italy, (LI) Secche della Meloria, -28 m, 9.IV.1984, leg. P. Mannini & C. Volpi, det. M. Borri, 1 sp. (MZUF 1625)

Italy, (GR) Giannutri Is., 7.V.1994, leg. S. Vanni, det. G. Innocenti, 1 sp. (MZUF 1986)

Italy, (GR) Giannutri Is., V.1995, leg. S. Vanni, det. G. Innocenti, 2 sp. (MZUF 2008)

Italy, (GR) Argentario, Rossa Is., 9.I.1972, leg. V. Wiechmann, det. ?, 3 sp. (MZUF 178)

Italy, (GR) Argentario, -6 m, 15.VI.1989, leg. M. Borri, A. Lazzeretti & S. Viciani, det. ?, 2 sp. (MZUF 1621)

Italy, (GR) Argentario, -6 m, 17.VI.1989, leg. M. Borri, P.L. Finotello & A. Lazzeretti, det. ?, 4 sp. (MZUF 1624)

- Italy, (GR) Gulf of Talamone, 16.I.1972, leg. V. Wiechmann, det. ?, 1 sp. (MZUF 174)
- Italy, (GR) Porto Ercole, 1 mile far from the harbour, IV.1972, leg. V. Wiechmann, det. ?, 1 sp. (MZUF 211)
- Italy, (NU) Capo Comino, 29.IV.1979, leg. B. Lanza *et al.*, det. G. Innocenti, 1 sp. (MZUF 2056)
- Italy, (CA) Cagliari, V-VI.1969, leg. A. Targioni Tozzetti & A. Carruccio, upd. E. Tortonese, 1 sp. (MZUF 188)
- Italy, (CA) Cagliari, 11.VII.1997, leg. M. Borri & C. Volpi, det. G. Eva, 4 sp. (MZUF 1674)
- Italy, (CA) Porto Corallo, 14.VII.1997, leg. M. Borri & C. Volpi, det. G. Eva, 9 sp. (MZUF 1851)
- Italy, (CA) Porto Corallo, 14.VII.1997, leg. M. Borri & C. Volpi, det. G. Eva, 2 sp. (MZUF 1852)
- Italy, (CA) southern Sardinia, 3.V.1988, leg. M. Borri & C. Volpi, det. G. Eva, 1 sp. (MZUF 1850)
- Italy, (CA) southern Sardinia, 2.VII.2001, leg. M. Borri & C. Volpi, det. G. Eva, 1 sp. (MZUF 1853)
- Italy, (CA) southern Sardinia, 28.VI.2001, leg. M. Borri & C. Volpi, det. G. Eva, 6 sp. (MZUF 1854)
- Italy, (CA) southern Sardinia, 28.VI.2001, leg. M. Borri & C. Volpi, det. G. Eva, 2 sp. (MZUF 1855)
- Italy, (CA) southern Sardinia, 3.VII.2001, leg. M. Borri & C. Volpi, det. G. Eva, 9 sp. (MZUF 1856)
- Italy, (CA) southern Sardinia, 27.VI.2001, leg. M. Borri & C. Volpi, det. G. Eva, 8 sp. (MZUF 1857)
- Italy, (CA) southern Sardinia, 20.V.1992, leg. M. Borri & C. Volpi, det. G. Eva, 3 sp. (MZUF 1930)
- Italy, (NA) Gaiola, -10 m, 27.X.1969, leg. M.L. Azzaroli, det. ?, 3 sp. (MZUF 183)
- Italy, (NA) Gulf of Naples, IX.1892, pur. Stazione Zoologica Napoli, det. ?, 3 sp. (MZUF 2115)
- Italy, (NA) Naples, IX.1874, leg. G. Cavanna, det. A. Targioni Tozzetti, 3 sp. (MZUF 191)
- Italy, (TA) Taranto, IX-X.1868, leg. A. Targioni Tozzetti, det. A. Targioni Tozzetti, 1 sp. (MZUF 193)
- Italy, (CZ) Grotticella, Capo Vaticano, 16.VII.1969, leg. M.L. Azzaroli, det. G. Innocenti, 5 sp. (MZUF 179)
- Italy, (ME) Messina, IX-X.1868, leg. A. Targioni Tozzetti, previous det. *Ophiura laevis*, det. A. Senna, upd. E. Tortonese, 2 sp. (MZUF 192)
- Italy, (ME) Messina, VIII-X.1878, leg. E.H. Giglioli & G.B. Toscanelli, det. A. Targioni Tozzetti, 1 sp. (MZUF 195)
- Italy, (TP) Mazara del Vallo, 8.IX.1984, leg. M. Borri, P. Mannini & C. Volpi, det. G. Innocenti, 1 sp. (MZUF 2038)
- Italy, (TP) Mazara del Vallo, 8.IX.1984, leg. M. Borri, P. Mannini & C. Volpi, det. G. Innocenti, 1 sp. (MZUF 2039)
- Italy, (TP) Mazara del Vallo, 10.IX.1984, leg. M. Borri, P. Mannini & C. Volpi, det. G. Innocenti, 1 sp. (MZUF 2031)
- Italy, (TP) Mazara del Vallo, 10.IX.1984, leg. M. Borri, P. Mannini & C. Volpi, det. G. Innocenti, 1 sp. (MZUF 2010)
- Italy, (TP) Mazara del Vallo, 11.IX.1984, leg. M. Borri, P. Mannini & C. Volpi, det. G. Innocenti, 1 sp. (MZUF 1990)
- Italy, (TP) Mazara del Vallo, 11.IX.1984, leg. M. Borri, P. Mannini & C. Volpi, det. G. Innocenti, 1 sp. (MZUF 2032)
- Italy, (TP) Mazara del Vallo, 14.IX.1984, leg. M. Borri, P. Mannini & C. Volpi, det. G. Innocenti, 2 sp. (MZUF 2006)
- Italy, (TP) Mazara del Vallo, 15.IX.1984, leg. M. Borri, P. Mannini & C. Volpi, det. G. Innocenti, 2 sp. (MZUF 1989)
- Italy, (TP) Mazara del Vallo, 15.IX.1984, leg. M. Borri, P. Mannini & C. Volpi, det. G. Innocenti, 2 sp. (MZUF 2030)
- Italy, (RG) Scoglitti, VIII.1960, leg. S. Carfi, det. ?, 4 sp. (MZUF 176)
- Italy, Sicily, <1860, leg. ?, det. A. Targioni Tozzetti, 1 sp. (MZUF 181)
- Italy, Lat. 30°49'40"N Long. 09°49'08"E, -60 m, R/N «Washington», VIII.1881, leg. E.H. Giglioli, det. C. Bartolini Baldelli, 1 sp. (MZUF 803)
- Italy, Mediterranean Sea, <1843, leg. ?, det. A. Targioni Tozzetti, 2 sp. (MZUF 182)
- France, Banyuls sur Mer, 1960, leg. B. Lanza & S. Carfi, det. ?, 1 sp. (MZUF 171)
- France, Nice, VI.1884, pur. Gal Freres, previous det. *Ophiura laevis*, det. A. Senna, upd. E. Tortonese, 1 sp. (MZUF 190)
- France, Corsica, Fautea, VII.1974, leg. M. Lanza, det. G. Innocenti, 11 sp. (MZUF 2036)
- Greece, 2000, don. F. Terzani, det. F. Terzani, 1 sp. (MZUF 2092)
- Greece, Chios, VIII.1992, leg. G. Innocenti & J. Ferretti, det. G. Innocenti, 1 sp. (MZUF 2020)

#### Infraorder OPHIOLEPIDINA Ljungman 1867

#### Family OPHIOLEPIDIDAE Ljungman 1867

#### *Ophiolepis cincta* Müller & Troschel 1842

Red Sea, <1843, don. Figari Bey, det. A. Senna, 4 sp. (MZUF 2121)

Egypt, Berenice Lake, 30.IV.1980, leg. G. Adriani (G.R.S.T.S.), det. ?, 2 sp. (MZUF 784)

Saudi Arabia, Jeddah, Obhor Creek, IV.1977, leg. G.R.S.T.S., det. E. Tortonese, 1 sp. (MZUF 869)

Somalia, Gesira, XII.1976, leg. S.B.S., det. E. Tortonese, 5 sp. (MZUF 369)

Somalia, Sar Uanle, XII.1976, leg. S.B.S., det. E. Tortonese, 4 sp. (MZUF 370)

Kenya, Shimoni, XI-XII.1993, leg. M. Borri & C. Volpi, det. M. Borri, 3 sp. (MZUF 1492)

Kenya, Vipingo, XI-XII.1993, leg. M. Borri & C. Volpi, det. M. Borri, 1 sp. (MZUF 1491)

#### *Ophiolepis superba* H.L. Clark 1915

Somalia, Mogadishu, XII.1976, leg. S.B.S., det. E. Tortonese, 1 sp. (MZUF 371)

Kenya, Vipingo, XI-XII.1993, leg. M. Borri & C. Volpi, det. M. Borri, 1 sp. (MZUF 1489)

Kenya, Shimoni, XI-XII.1993, leg. M. Borri & C. Volpi, det. M. Borri, 2 sp. (MZUF 1490)

Indian Ocean, IX.1867, don. F. Parlatore, previous det. *Ophiolepis annulosa* de Blainville, det. A. Senna, upd. G. Innocenti, 1 sp. (MZUF 2120)

#### *Ophiolepis* sp.

Jordan, Gulf of Aqaba, 4.V.1975, leg. B. Lanza, det. ?, 1 sp. (MZUF 1650)

#### *Ophioplocus imbricatus* (Müller & Troschel 1842)

Somalia, Gesira, XII.1976, leg. S.B.S., det. E. Tortonese, 2 sp. (MZUF 368)

Kenya, Mombasa, 5-23.IX.2000, leg. M. Borri & C. Volpi, det. M. Borri, 6 sp. (MZUF 2110)

Kenya, Shimoni, XI-XII.1993, leg. M. Borri & C. Volpi, det. M. Borri, 2 sp. (MZUF 1494)

Kenya, Vipingo, XI-XII.1993, leg. M. Borri & C. Volpi, det. M. Borri, 16 sp. (MZUF 1493)  
 Viti Is. (= Fiji Is.), pur. C.A. Pohl, IV.1889, det. A. Targioni Tozzetti and A. Senna, 1 sp. (MZUF 865)

#### OPHIUROIDEA GEN. SP.

Italy, (LI) Livorno, 1986, leg. I.S.T.I.P., 1 sp. (MZUF 2213)  
 Italy, (LI) Livorno, 1986, leg. I.S.T.I.P., 1 sp. (MZUF 2214)  
 Italy, (SS) Maddalena Is., -45-60 m, 15.VI.1998, leg. G. Innocenti, 6 sp. (MZUF 2047)  
 Israel, Eilat, Coral Beach, 24-25.XI.1995, leg. G. Innocenti, 1 sp. (MZUF 2022)  
 Saudi Arabia, Jeddah, Obhor Creek, IV.1977, leg. G.R.S.T.S., 1 sp. (MZUF 2029)  
 Somalia, between Durbo and Meragno, X.1973, leg. M.L. Azzaroli, 1 sp. (MZUF 2012)  
 Somalia, between Durbo and Meragno, X.1973, leg. M.L. Azzaroli, 1 sp. (MZUF 2024)  
 Somalia, Gesira, XII.1976, leg. S.B.S., 1 sp. (MZUF 2059)  
 Somalia, Gesira, X.1981, leg. M. Vannini, 1 sp. (MZUF 2138)  
 Somalia, Gesira, X.1981, leg. M. Vannini, 1 sp. (MZUF 2139)  
 Somalia, Sar Uanle, 27.V.1973, leg. M. Vannini & G. Chelazzi, 2 sp. (MZUF 2048)  
 Somalia, Sar Uanle, intertidal plateau, inside a sponge, X.1971, leg. M. Vannini, 1 sp. (MZUF 2049)  
 Kenya, Mombasa, 5-23.IX.2000, leg. M. Borri & C. Volpi, 3 sp. (MZUF 2129)  
 Kenya, Shimoni, XI-XII.1993, leg. M. Borri & C. Volpi, 1 sp. (MZUF 2011)  
 Kenya, Vipingo, XI-XII.1993, leg. M. Borri & C. Volpi, 2 sp. (MZUF 2016)  
 Tanzania, Pemba, coral reef, VIII.1995, leg. F. Tarducci, 2 sp. (MZUF 2132)  
 Tanzania, Pemba, coral reef, VIII.1995, leg. F. Tarducci, 2 sp. (MZUF 2131)  
 Tanzania, Pemba, coral reef, VIII.1995, leg. F. Tarducci, 2 sp. (MZUF 2130)  
 Ceylon (= Sri Lanka), Trincomalee, 3-10 fathoms, IV.1889, leg. K. Fristedt, 3 sp. (MZUF 2063)  
 Thailand, Koh Samui Is., I.1984, leg. E. Talenti, 5 sp. (MZUF 2071)  
 Indonesia, Sorong, V.1872, leg. L.M. De Albertis, 1 sp. (MZUF 2084)  
 Indonesia, Sorong, V.1872, leg. L.M. De Albertis, 2 sp. (MZUF 2083)  
 Philippines, Palawan Is., Kaminawit Bay, 3.III.1991, leg. M. Borri & C. Volpi, 7 sp. (MZUF 2062)  
 Philippines, Palawan Is., St. Paul S.N.P., 20-27.II.1991, leg. M. Borri & C. Volpi, 2 sp. (MZUF 2135)  
 Philippines, Palawan Is., St. Paul S.N.P., 20-27.II.1991, leg. M. Borri & C. Volpi, 4 sp. (MZUF 2134)

Philippines, Palawan Is., St. Paul S.N.P., 20-27.II.1991, leg. M. Borri & C. Volpi, 9 sp. (MZUF 2133)  
 Philippines, Toloran Is., 3.III.1991, leg. M. Borri & C. Volpi, 7 sp. (MZUF 2009)  
 Curaçao, III.1931, leg. N. Beccari, 7 sp. (MZUF 2058)  
 Ecuador, Galapagos Is., Barrington Is., 22.XII.1971, leg. M.L. Azzaroli, 2 sp. (MZUF 266)  
 Ecuador, Galapagos Is., Isabela Is., Tagus Bay, 2.I.1972, leg. M.L. Azzaroli, 2 sp. (MZUF 2055)  
 Ecuador, Galapagos Is., Seymour Is., 29.XII.1971, leg. M.L. Azzaroli, 1 sp. (MZUF 2075)

#### ACKNOWLEDGEMENTS

Many thanks are due to the former Echinoderms curator, Marco Borri and to his collaborators Roberta Fareltri and Giuseppina Eva.

#### REFERENCES

- Azzaroli M.L. 1974. Notes on some echinoderms from the Galapagos Islands. In: «Galapagos. Studie e ricerche. Spedizione L. Mares-G.R.S.T.S.», pp. 327-338, Gruppo Ricerche Scientifiche Tecniche Subacquee, Firenze.
- Bartolini Baldelli C., 1914. Asteroidi, ofiuroidi, crinoidi, oloturoidi raccolti nel Mediterraneo dalla R.N. «Washington» (1881-1882). *Arch. Zool. ital., Napoli* 7: 81-113.
- Borri M., Righini P., Piras A., 1990. Fauna echinologica dei fondi molli dell'alto Tirreno e note sulle biocenosi relative. *Atti Soc. ital. Sc. nat.* 131 (26): 377-410.
- Fredj G., Ghirardelli E., Matarrese A., Tursi A., 1995. Deuterostomia (escl. Vertebrata). In: Minelli A., Ruffo S., La Posta S. (Eds.), *Checklist delle specie della fauna italiana*, 109. Ed. Calderini, Bologna.
- G.R.S.T.S., 1986. Underwater Scientific & Technical Research Group. Florence - Italy. 1966-1986. Twenty years' private contribution to research, 1-31. Tipografia Giuntina, Firenze.
- Pardi L., 1976. L'attività del «Centro di Studio per la Faunistica ed Ecologia Tropicali» del Consiglio Nazionale delle Ricerche nel quinquennio 1971-1976. *Monit. Zool. Ital. N.S., Suppl.* 7: 195-269.
- Pardi L., 1982. L'attività del «Centro di Studio per la Faunistica ed Ecologia Tropicali» del Consiglio Nazionale delle Ricerche dal 1976 al 1981. *Monit. Zool. Ital. N.S., Suppl.* 16: 219-262.
- Peters W., 1851. Übersicht der an der Küste von Mossambique eingesammelten Ophiuren, unter denen sich zwei neue Gattungen befinden. *Ber. K. Preuss. Akad. Wiss. Berlin* 1851, 463-466.
- Stöhr S., O'Hara T. (Eds.), 2009. World Ophiuroidea database at <http://www.marinespecies.org/ophiuroida/>
- Tortonese E., 1979. Echinoderms collected along the eastern shore of the Red Sea (Saudi Arabia). *Atti Soc. ital. Sc. nat.* 120 (3-4): 314-319.
- Tortonese E., 1980. Researches on the coast of Somalia. Littoral Echinodermata. *Monit. Zool. Ital. N.S., Suppl.* 13: 99-139.

(ms. pres. il 3 novembre 2010; ult. bozze il 7 ottobre 2011)

